

# CANCUN COLLECTION

**FON**TILE  
kitchen & bath

Description: Ceramic Wall Tiles

Nominal size: 24"x60"

Actual size: 60x150 cm

Thickness: 12.5 mm

Brand: Porcelanosa - Spain

## RETAIL PRICING

	\$/sft	\$/ctn	
24"x60"	13.95	402.40	PT1

## PACKING

	pc/ctn	pc/pallet	sft/pc
24"x60"	3	60	9.62

## FINISH

	Matte	Polished	Rectified	3D
Plain	✓		✓	
Decor	✓		✓	✓

## TECHNICAL INFORMATION

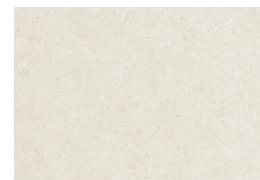
	Water Absorption	Stain Resistant	Chemical Resistant	Frost Resistant
24"x60"	10%≤E≤20%	✓	✓	

## APPLICATION

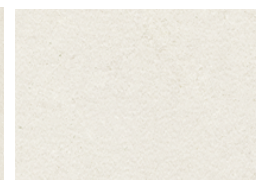
	Wall	Floor
24"x60"	✓	

Ask your sales rep. for other colors/sizes that might be available as special-orders.

Pricing is listed as Regular Retail + is subject to change without notice.



CALIZA



LINE CALIZA



BLOCK CALIZA\*



CANAL CALIZA\*

\*Special Order from Spain: 10-12 weeks