

TERRA COLLECTION

FONTILE
kitchen & bath



TERRA COLLECTION

Description: Ceramic Wall Tiles

Nominal size: 24"x60" | 47"x47"

Actual size: 60x150 cm | 120x120 cm

Thickness: 12.5 mm | 8.5 mm

Brand: Porcelanosa - Spain

RETAIL PRICING

	\$/sft	\$/ctn	PT1
24"x60"	13.95	402.40	
47"x47"	14.00	216.99	

PACKING

	pc/ctn	pc/pallet	sft/pc
24"x60"	3	60	9.62
47"x47"	1	42	15.50

FINISH

	Matte	Polished	Rectified	3D
Plain	✓		✓	
Decor	✓		✓	✓

TECHNICAL INFORMATION

	Water Absorption	Stain Resistant	Chemical Resistant	Frost Resistant
24"x60"	10%≤E≤20%	✓	✓	
47"x47"	E≤0.1%	✓	✓	

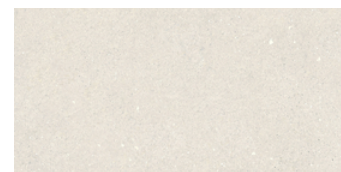
APPLICATION

	Wall	Floor
24"x60"	✓	
47"x47"		✓

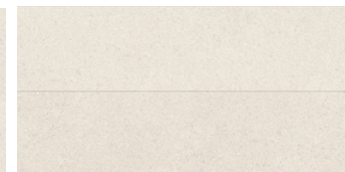
Ask your sales rep. for other colors/sizes that might be available as special-orders.

Pricing is listed as Regular Retail + is subject to change without notice.

FONTILE
kitchen & bath



BONE



LINE BONE



DECO BONE*

*Special Order from Spain: 10-12 weeks