

Technical book

raised access
flooring

butech
PORCELANOSA Grupo



BY APPOINTMENT TO
H.R.H. THE PRINCE OF WALES
MANUFACTURER AND DISTRIBUTOR
OF CERAMIC TILES AND BUILDING PRODUCTS.
PORCELANOSA GROUP LIMITED

PORCELANOSA Grupo



Index

- 4 Raised Access Floor
- 24 Outdoor Raised Access Floor
- 34 How to quote an outdoor RAF
- 42 Floor Tiles
- 52 Projects list
- 54 Showrooms

Raised access flooring

The raised access flooring (RAF) is a system that was born from the need to hide the large number of installations such as telephone and electricity wiring, piping, air conditioning, etc... that are located in work areas, technical rooms, etc...

These installations are hidden under the system, as a "technical plenum" has been created with immediate and easy accessibility. It also lets us carry all the installations neatly.

System application areas

The use of raised access floor is highly recommended in those areas where there are a large number of elements running under the floor, with the advantage of having an easy and immediate accessibility.

Commercial applications: offices, libraries, museums, schools, shopping centres, etc.

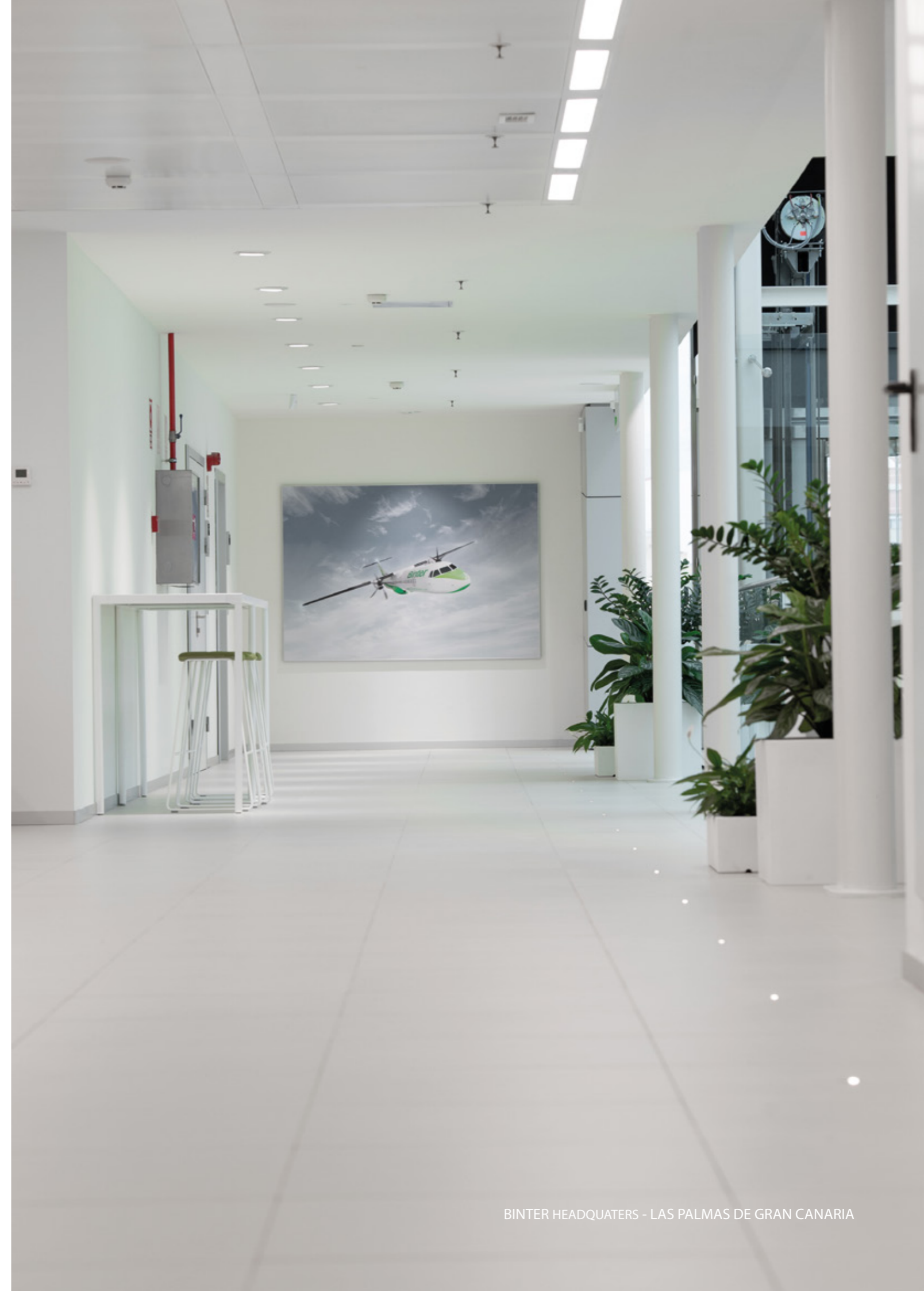
Technical applications: telecommunications/electricity plants, control rooms, laboratories, data centres, etc.

Advantages

- Ability to hide away all types of ugly and dangerous cables, pipes etc under the floor.
- Improved installation efficiency in comparison to conventional floors (installation rate of about 40 m²/day).
- Easy to take with you when relocating offices.
- Option of rerouting services following installation of floor.
- Clean installation without the use of cement, avoiding the production of debris, dust, noise, etc.

Advantages over other raised access floor systems

- Able to withstand a high mechanical load.
- The potential for combining different structures, as required in each particular case.
- It has an excellent reaction to fire under laboratory testing.
- It has very low dimensional tolerances, which allow for a perfect exchange of panels.
- Cores made of high-performance materials with very high densities.
- Compliance with UNE EN ISO 9001, guaranteeing quality controls during each stage of the manufacturing process.
- On the top surface, any 60 x 60 ceramic tile by Porcelanosa or other non-ceramic coverings (plastic laminate, linoleum, vinyl, granite, aluminium, steel, carpet, parquet etc) can be used.
- The pieces are protected by a plastic material edging, in order to prevent the tiles from spalling.
- A wide range of complementary products to ensure a good finish.

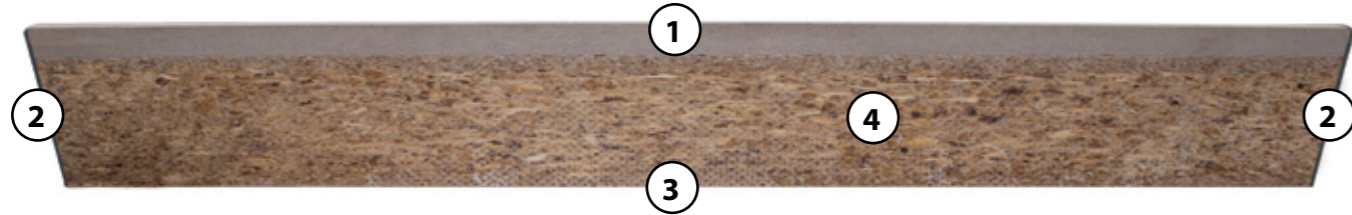


Panels

Panels with chipboard core.

They are made of chipboard with a high-performance resin binder. Available in a thickness of 38mm, they feature an aluminum, galvanized steel or plastic lower covering, thus offering slightly different properties to suit each individual case.

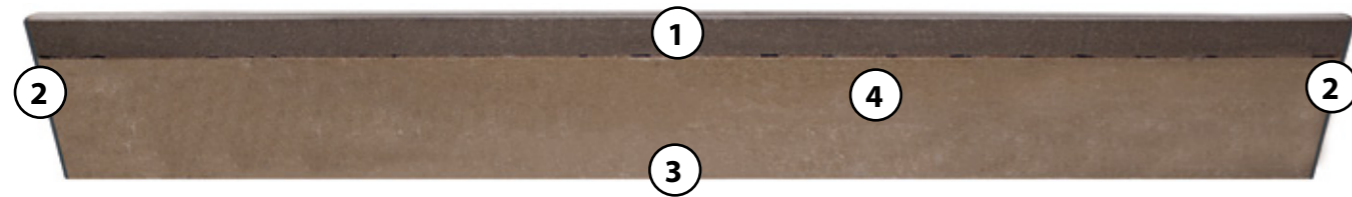
The panels have a plastic surround to prevent the edges from breaking.



1. Covering piece
2. Edging.
3. Lower covering.
4. Wood core.

Panels with calcium sulfate core.

It consists of a mineral soul of a single layer based on calcium sulfate of high density. Available in 30 mm thicknesses and with lower coating of aluminum or galvanized steel. As in the wood panels, the perimeter of all the panels has a plastic surround to prevent the edges from breaking.



1. Covering piece
2. Edging.
3. Lower covering.
4. Calcium sulfate core.

Panel with ceramic core.

Formed by a core of high-density inert and inorganic material. Available in thickness of 15 mm. As in the wood and sulphate panels, the perimeter of all panels is trimmed with plastic in order to prevent parts from peeling. Ideal material for wet areas and/or humid areas as it is non-absorbent (water absorption of 0.05%).



1. Covering piece
2. Edging.
3. Ceramic core.



TECHNOLOGICAL BUILDING OF UNIVERSITAT JAUME I - CASTELLÓN DE LA PLANA

Available panel formats

Format 60x60 cm

Available in porcelain finish (any 59.6x59.6cm floor tile from PORCELANOSA Grupo) or non-ceramic, such as vinyl, plastic laminate, carpet, linoleum, etc.



Format 58x120 cm

Porcelain finish. Each panel contains 3 PAR-KER tiles (format 19.3x120 cm) from PORCELANOSA Grupo.



Structure

The structure is made up of pedestals and stringers, which support the floor covering and ensure the necessary height and rigidity.

Pedestals

100% galvanised steel structure. These pedestals dictate the floor height according to the project requirements. Each pedestal incorporates a series of plastic noise-reduction heads fitted with four positioning lugs. One of the main advantages of the pedestal system is that it is fitted with a 14 mm threaded bolt that can be adjusted to accommodate different floor height requirements.



Stringers

Like the pedestals, the stringers are made entirely of galvanised steel. Their main function is to increase the strength of the floor. They are covered with special noise-reduction strips.



From the point of view of performance, it presents a high resistance to bending vertical load and / or eccentric, thanks to a screwed bolt M16 section, a tube of diameter 20 mm of thickness of 2 mm, internally calibrated to obtain a coupling with smaller tolerances and therefore less spaces and a direct connection between the screwed bolt of the disc base and tube, without need of interposing deformable plastic elements.

Depending on the configuration of both the panel and the structure, we can achieve a resistance to static loads up to 4,400 kg/m².







SAN LUCAR HEADQUARTERS - PUZOL



ENEL HEADQUARTERS - MADRID



VIP LOUNGE VALENCIA AIRPORT - VALENCIA





butech.

Raised access flooring for exteriors

The raised access floor (RAF) system for terraces has been specially created to solve the aesthetic problem that exists with the slopes in terraces and to hide elements under the floor.

By building a completely flat floor over the existing terrace floor, these slopes are conveniently hidden underneath.

Height deviations are offset with height-adjustable plots and any accumulated water is drained through open joints on the newly paved surface and then channelled down the terrace's waterproofed slopes to the drain.

Advantages

- The system can be used to create a flat paved surface over sloping masonry floors with height deviations of up to 3%. Any height deviations over 2% will need to be corrected with mortar or with wedges.
- The creation of an air void under the newly paved surface generates a continuous flow of air through the pavement joints, which prevents the build-up of condensation and also produces an insulation layer.
- The under floor void, can also be used to house cables, pipes, etc.
- Easy to access this space under the floor (do not use P-404 to bond tiles and plots in areas where you need to access the services underneath and be able to have space to work on it).
- The plenum created by the floor elevation reduces the level of noise on the lower floor.
- The system is quick to install as the tiles and supports are installed at the same time.
- Advantages of PORCELANOSA Grupo pavement: Easy to clean, low dimensional tolerances, wide variety of finishes, hardness, etc.



The external RAF is a type of over-raised pavement with special ceramic tiles that are arranged on plastic PVC plots of adjustable height, so that a hollow space is determined between the support and the floor tiles.

The elements that make up this system are as follow:

Panels for outdoor RAF

Porcelain tiles from PORCELANOSA Grupo.

There are two types of Outdoor RAF panels:

Double piece: two porcelain tiles from PORCELANOSA Grupo are adhered together with hot melt moisture reactive adhesive

20mm thick porcelain tile: produced by URBATEK

Outdoor RAF structure:

Three types of pedestals are available:

Fixed Plot: a non-adjustable pedestal for the lowest heights. Available in 10, 15 and 20mm

Normal, Ultra Plot: adjustable pedestals for heights higher than 30mm. Recommended for plank formats

Stem: Adjustable height rod that allows adapting height of the plot to the needs of the pavement over-raised.

Plot N: stronger pedestals for the most demanding situations

These pedestals, made of weatherproof plastic, support the Outdoor RAF panels, determine the system height and set the joint thickness between the panels. These elements consist of the following parts:

Base: with a large diameter that distributes the weight of the system on the substrate

Stem: adjustable height that allows adapting the height of the pedestals to the needs of the project

Head: where the Outdoor RAF panels are laid, with 4 spacers which determine a joint width of 4mm

Butech also supplies the materials needed for the installation of this system:

P-404: polyurethane adhesive to fix the structure to the substrate

5mm Flexible wedges: to absorb imperfections of the slab or to compensate more pronounced slopes

Polyurethane foam: to adjust the perimeter panels so that the system is perfectly tight

Optional

Levelling key for Plot N: to adjust the pedestal height once the panels have been placed, allowing the compensation of different levels

The total height of the plot can be adjusted for different adjustable heights.



SAP: 100236951

System accessories:



End profile for RAFx

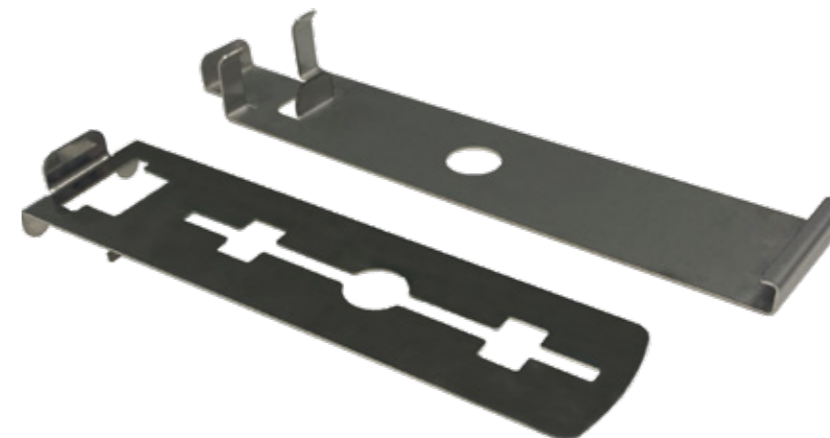
Butech's top profile is a solution to hide the aesthetic inconvenience that occurs when a step has to be made with the Raised Floor. This profile, in addition to hiding the edge of the ceramic piece, allows us to anchor a vertical piece to the plot to hide the body of the plots *

Made of aluminum, and with a length of 1200mm, it can be used in thickened tiles (**SAP: 100280081**) with a 20mm depth, and in double-piece tiles (**SAP: 100290783**) with a 23mm depth. For a correct clamping of the vertical piece from its lower part, several units of the Lower Clip (**SAP: 100253748**) will be necessary.

* Option valid only for Plot N



Vertical Enclosure Clip



SAP: 100253729

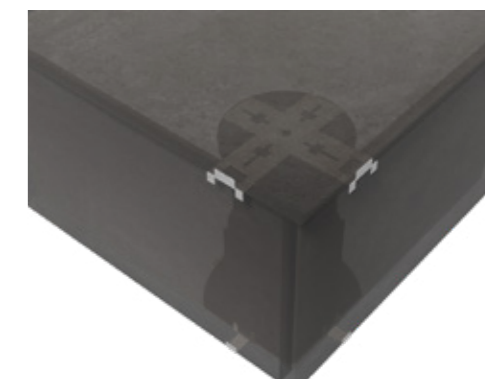
Made of the highest stainless steel quality, and essential to finish a floor with no perimeter wall or enclosure.

These clips have two components: upper clip, fixed to the pedestal head, and lower clip, which goes on a previously cut pedestal base.

The perimeter panels are easily installed with these clips.

For a correct installation, the pedestal base has to be cut as shown in the images.

Only compatible with Plot N.



The description of the Outdoor RAF panel refers only to the upper tile, which may differ from the lower tile in colour and aspect.

Cutting the 20mm thick Outdoor RAF panels exposes the internal section of the tile, which differs from the original non-cut side in colour and aspect.



Plots non ajustables (Basic Plot)

Type	Non adjustable - pilled up
Material	Polypropylene with mineral load
Colour	Black
Compression resistance	8.000 kg/unit approximately
Dimensions	100 x 100 mm and Ø 115 mm
Heights	10 mm 15 mm 20 mm
Separation between tiles	4 mm



Plots ajustables (Normal Plot)

Type	Adjustable
Material	Polypropylene with mineral load
Colour	Black
Compression resistance	750 kg/unit approximately
Dimensions	Lower support base Ø 150 mm Upper head Ø 92 mm
Thread type	Double trapezoidal thread
Heights	Minimum 30 mm Maximum 670 mm
Slopes	From flat to 2 %
Separation between tiles	4 mm



Plots ajustables (Plot N)

Type	Adjustable
Material	Polypropylene with mineral load
Colour	Black
Compression resistance	2.800 kg/unit approximately
Dimensions	Lower support base Ø 205 mm Upper head Ø 150 mm
Thread type	Double trapezoidal thread
Heights	Minimum 30 mm Maximum 670 mm
Slopes	From flat to 3 %
Separation between tiles	4 mm



Plots ajustables (Ultra Plot)

Type	Adjustable
Material	Polypropylene with mineral load
Colour	Black
Compression resistance	1.000 kg/unit approximately
Dimensions	100/130: Lower support base Ø 150 mm Upper head Ø 92 mm Rest of the heights: Lower support base Ø 160 mm Upper head Ø 140 mm
Thread type	Double trapezoidal thread
Heights	Minimum 100 mm Maximum 670 mm
Slopes	From flat to 2 %
Separation between tiles	4 mm



Porcelain Paver

3/4" Thick Tile

The advances in manufacturing techniques and new landmark frontier technology brought the possibility of producing porcelain tiles in a much greater thickness as traditionally, enabling these tiles to be used for exterior structural paving applications. Our high performance 3/4" thick tiles offer an extraordinary load-bearing strength and hard-wearing resistance combined with an outstanding aesthetic appearance and anti-slip finish. They are ideal for any commercial or residential project and suitable for rooftops, terraces, patios, decks, balconies, etc.



Double Porcelain Tile

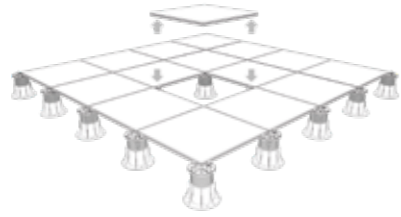
This exclusive and unique product is the ultimate solution for outdoor raised floor projects providing trendsetting cuttingedge designs of unparalleled beauty and refinement. These double pieces are available in same size, color and finish than most of our porcelain tiles which enables the possibility of creating unbroken visual continuity between outdoor and indoor spaces in any residential or commercial project. Given its extreme wear and weather resistance, it is the perfect alternative to wood and stone that will remain absolutely unchanged over time.



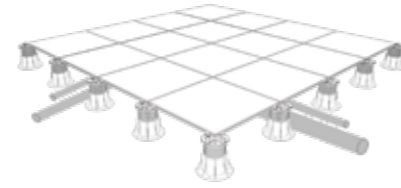
Advantages



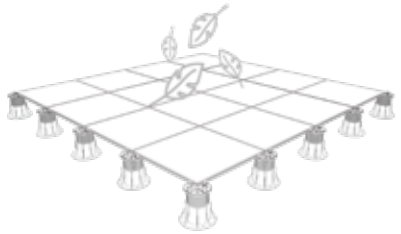
Optimal water drainage during rain or cleaning.



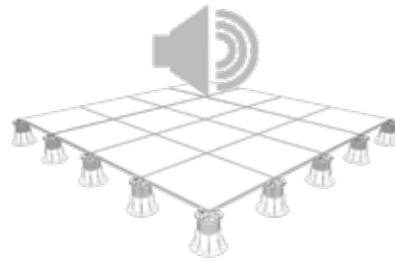
Panels can be lifted anytime, granting permanent access to the subfloor.



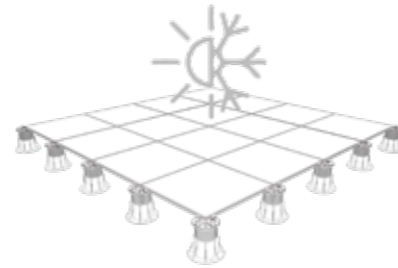
Elements such as pipes are completely hidden under the panels.



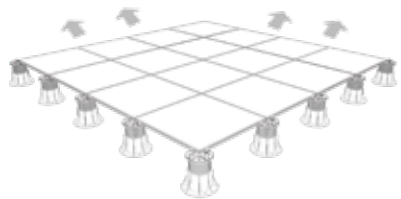
Light system compared to the typical concrete pavers system.



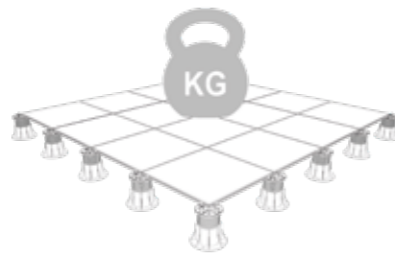
Great acoustic insulation



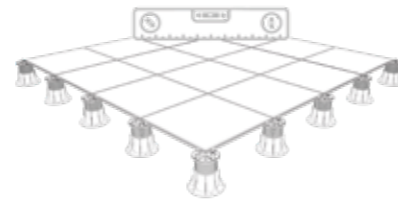
Good thermal insulation created by the air chamber between the raised access floor surface and the roof.



No need for expansion joints.



Good mechanical resistance.



Flat and level finish. Slopes and drains are hidden.



How to quote an outdoor RAF

Information needed

- Provide plans (with dimensions)
- Tile and size to be used
- Perimeter heights (to the desired height of the deck with panel included)
- Drain locations
- Drain heights (to the desired height of the deck with panel included)
- Threshold heights (to the desired height of the deck with panel included)
- Desired tile pattern

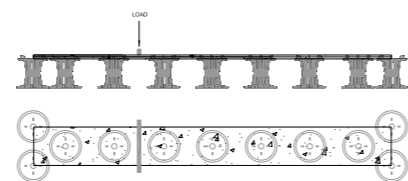
Once this information is received, butech will provide with pricing for different installation options with different pedestals layouts under the panel, depending on the breaking load required. A drawing with a complete layout is also supplied.



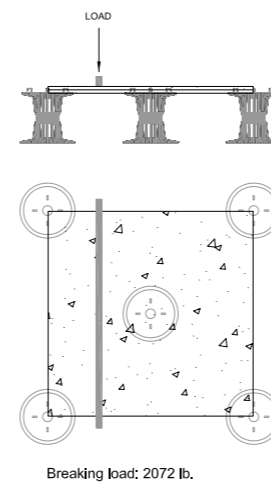


RESIDENTIAL PROJECT - CARLET
 ARCHITECT: FERNANDO GOZÁLBEZ BLASCO - PHOTOGRAPHY: ADRIÁN MORA

1. **Reference:** Carlet Vic Projects
2. **Location:** Carlet, Valencia
3. **Area:** 80 m²
4. **Double tile:** Manhattan Colonial Ant. 19,3 cm x 180 cm
5. **Pedestal layout:**



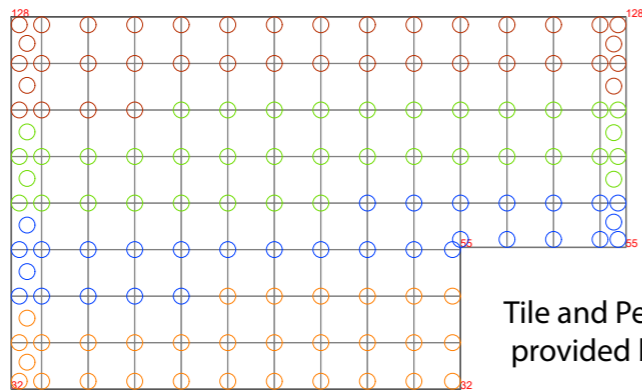
1. **Reference:** El gordo y el flaco restaurant
2. **Location:** Bétera (Spain)
3. **Area:** 70 m²
4. **Double tile:** Rox Grey Ant. 59,6 cm x 59,6 cm
5. **Pedestal layout:**



COMMERCIAL PROJECT - BÉTERA
 PHOTOGRAPHY: GERMÁN CABO ARNAL

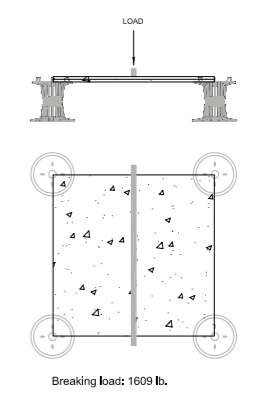


RESIDENTIAL PROJECT - SEATTLE, WA
 CONTRACTOR: MACPHERSON CONSTRUCTION & DESIGN - PHOTOGRAPHY: KAYLA ESPARZA PHOTOGRAPHY



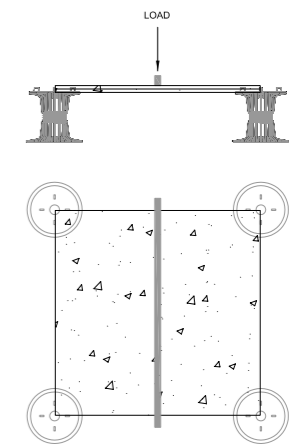
Tile and Pedestal Layout provided by **butech**

1. Reference: Miller Sunken Patio
2. Location: Bellevue, Washington (USA)
3. Area: 34 m²
4. Double tile: Krono Clay Nature 59,6 cm x 59,6 cm
5. Pedestal layout:





1. **Reference:** Residential Project
2. **Location:** Jerez de la Frontera, Cádiz
3. **Area:** 210 m²
4. **Double tile:** Dover Caliza Antislip 59,6 cm x 59,6 cm
5. **Pedestal layout:**



Breaking load: 1609 lb.



FLOOR TILES

PORCELAIN PAVERS

BOTTEGA

Rectified Porcellanato Tiles



BOTTEGA CALIZA ANT. RECT.

100 x 100 x 2 cm

100306073 GB-1385



BOTTEGA ACERO ANT. RECT.

100 x 100 x 2 cm

100306036 GB-1385





DURANGO

Rectified Porcellanato Tiles



DURANGO ACERO ANT. RECT.

100 x 100 x 2 cm

100306090 GB-1385

RIVEN

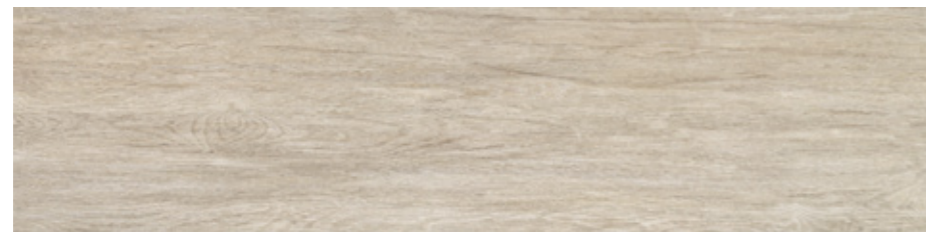
Rectified Porcellanato Tiles



RIVEN WHITE

29,5 x 120 x 2 cm

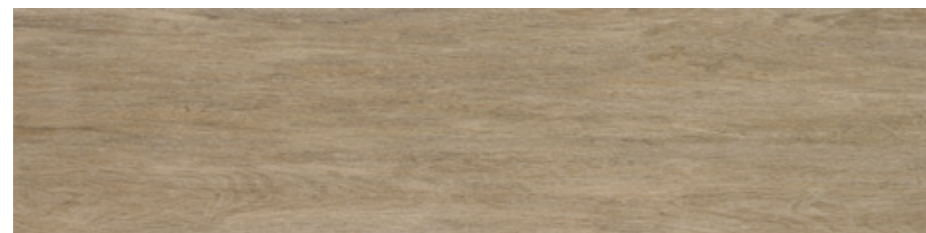
100234121 GB-1670



RIVEN CREAM

29,5 x 120 x 2 cm

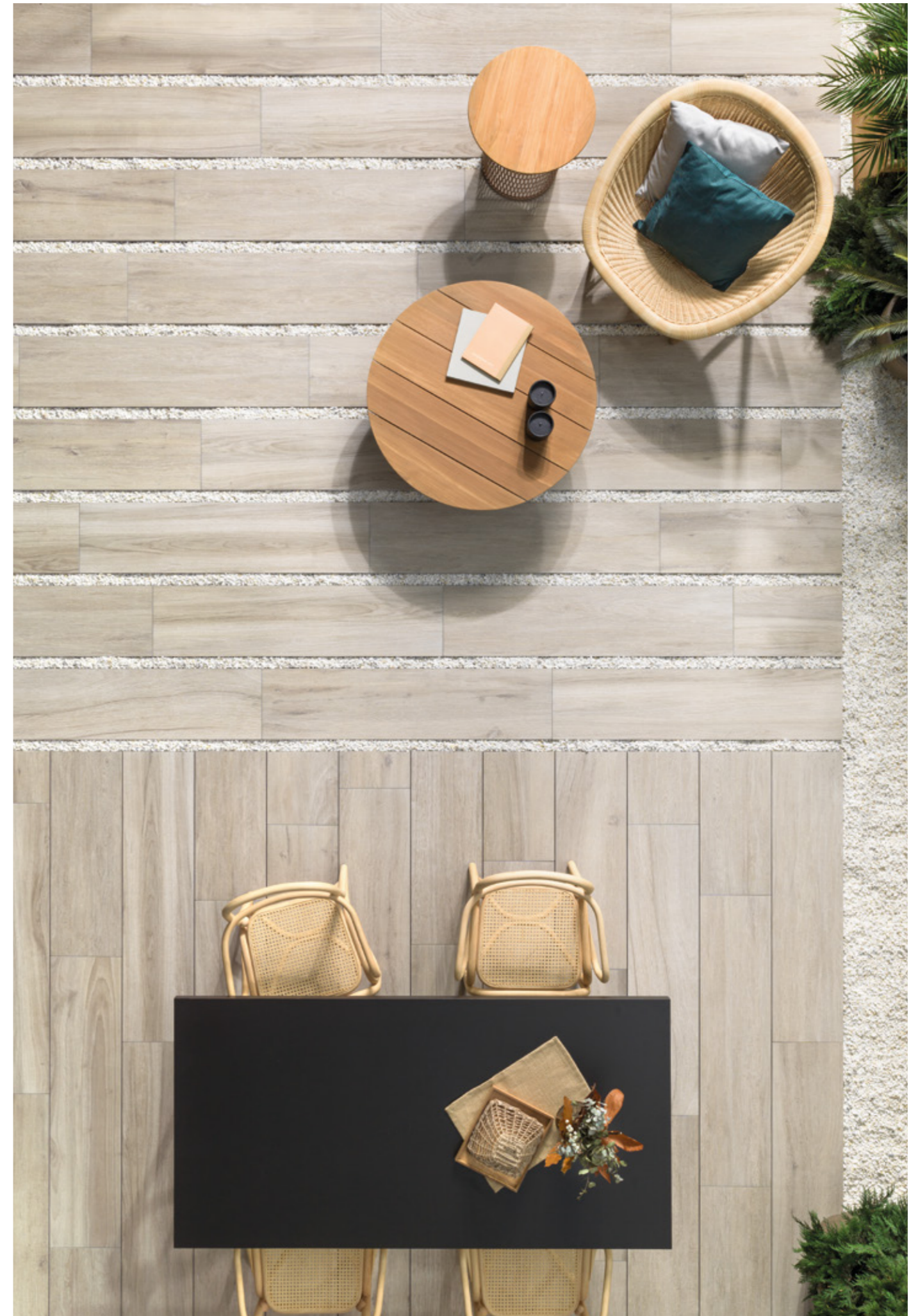
100234103 GB-1670



RIVEN BROWN

29,5 x 120 x 2 cm

100234064 GB-1670





ROX

Porcellanato Tiles



ROX COAL
60 x 60 x 2 cm
100299917 GB-1664



ROX GREY
60 x 60 x 2 cm
100299981 GB-1664



ROX BEIGE
60 x 60 x 2 cm
100299938 GB-1664

DOUBLE TILE

As an alternative to 20mm tiles, manufacturing thickened panels with any PORCELANOSA Grupo tile model is possible. The only requirement is choosing a 10mm thick tile available in anti-slip version.

Should you need more information please contact the butech technical department.



Projects completed

RAF Projects

Edificio Cubo La Pipa	3500 m ²	Madrid	Spain	Sala de control guardia civil	670 m ²	-	Spain
Oficinas Edificam	450 m ²	Mallorca	Spain	SSCC	660 m ²	Almería	Spain
Oficinas BBVA	900 m ²	Valencia	Spain	Proyecto nokia (GESAB)	580 m ²	-	México
Edificio binter	3980 m ²	Las Palmas	Spain	Sala vip aeropuerto Manises	550 m ²	Manises	Spain
INSS leon	3580 m ²	León	Spain	Mgt diseño sas	530 m ²	-	Colombia
Nuevas oficinas San Lucar	2550 m ²	Valencia	Spain	P. Mexico - gesab	490 m ²	-	México
Bassin d'aménagement du bassin versant	960 m ²	-	Portugal	Paseo medio	480 m ²	Almería	Spain
Roche farma madrid	900 m ²	Madrid	Spain	SSCC 2ª plta. Rrhh	310 m ²	Almería	Spain
Oficinas I9001 almeria av. Monserrat	830 m ²	Almería	Spain	Colten infraestructuras	200 m ²	Córdoba	Spain
BNI sede plaza	770 m ²	-	Angola	Oficinas Renault	640 m ²	-	United Kingdom

For more information, visit our website: www.butech.net or consult our profiles on Social Media.

RAFx Projects

Residencial La Finca LGC3	14000 m ²	Pozuelo de Alarcón	Spain	Alfred homes	290 m ²	-	United Kingdom
Promoción Panorama	4000 m ²	Málaga	Spain	Casa rojo enologia creativa SL	280 m ²	Jumilla	Spain
28 viviendas	3700 m ²	Estepona	Spain	Construcciones sena rosado SL	260 m ²	Cádiz	Spain
Hotel Lux Isla	160 m ²	Ibiza	Spain	12 Viv. Los jardines arruzafa II	230 m ²	Córdoba	Spain
Construcciones marcaser	900 m ²	Murcia	Spain	Unifamiliar Claremont 11 LTD	230 m ²	Murcia	Spain
Edificio independencia Mapfre	820 m ²	Madrid	Spain	PGB - quicke	210 m ²	-	Escocia
Otl enterprises	780 m ²	Nueva York	EEUU	Unifamiliar Miniluxe INC	190 m ²	-	France
Proyecto nokia (GESAB)	580 m ²	-	México	Grans viles es pla SL	110 m ²	Madrid	Spain
ZDS INC	510 m ²	New york	EEUU	Edificio Avda. France	105 m ²	New york	EEUU
Werner friedrich	470 m ²	Mallorca	Spain	Bar Marchfranch	100 m ²	Mallorca	Spain
Hotel barcelo el emba-jador	390 m ²	Sto. Domingo	Spain	Unif. Ibiza	100 m ²	Mallorca	Spain
Atrium design group	390 m ²	Nueva York	EEUU	Hotel Gran Garbí	290 m ²	Valencia	Spain
Noah properties (fase 2)	390 m ²	Nueva York	EEUU	Mult. Jardinana	115 m ²	Girona	Spain
Grand sirenis Riviera Maya	360 m ²	-	México	INSS de León	230 m ²	Ibiza	Spain
P. Cataluña	320 m ²	Sitges	Spain	Mult. Jardines de Arruzafa	150 m ²	Lloret de Mar	Spain
Hotel catalonia ses esta-ques	300 m ²	Ibiza	Spain				



PORCELANOSA Showrooms

INTERNACIONAL | INTERNATIONAL

REPÚBLICA CHECA

BRNO_DESIGN BATH SE · +420 547 216 621
LIBEREC_DORINT GROUP, A.S. · +420 602457510
PRAHA_DESIGN BATH SE · +420 222 984 951
PRAHA_DORINT PHA S.R.O. · +420 271 745 269

REPÚBLICA DEMOCRÁTICA DEL CONGO

KINSHASA_SOCIETE PANACHE · +243 884 1677 +243 983 13893

REPÚBLICA DOMINICANA

BÁVARO_CARABELA S.R.L. · +1 809 466 0020 +1 809 466 2006
LA ROMANA_CARABELA S.R.L. · +1 809 556 3606 / 809 550 9006 +1 809 221 7416
SANTIAGO_CARABELA S.R.L. PORCELANOSA · +1 809 971 1234 +1 809 971 6728
SANTO DOMINGO_CARABELA S.R.L. · +1 809 544 2560 +1 809 541 0818

REUNIÓN

SAINT DENIS_RAVATE PROFESSIONNEL SAS · +262 904 024 +262 904 057

RUMANÍA

BRASOV_DELTA STUDIO BRASOV · +40 (723) 101.430
BUCAREST_GLAMOUR · 40311000586
BUCAREST_GLAMOUR · 0040 31 229 3210
BUCAREST_DELTA STUDIO SRL · 0374 659 007
CLUJ-NAPOCA_STUDIO CLUJ-NAPOCA 0364880060
CONSTANTA_DELTA STUDIO CONSTANTA · 0722 240 736
CRAIOVA_SC MYDWAY IMPEX SRL · +40 722 285 029 +40 251 427 946
IASI_DELTA STUDIO IASI · 0730 586 938
ORADEA_MAIISON DESIGN · +40 743 507 811 +40 259 410 170
PITESTI_DELTA STUDIO PITESTI · 0723 363 823
PLOIESTI_DELTA STUDIO PLOIESTI · 0723 541 737
SIBIU_DELUXE STUDIO · +40 743 213 263
TIMISOARA_DELTA STUDIO TIMISOARA · 0374659015

SENEGAL

DAKAR_C.C.S. · +221 33 849 04 04 +221 33 823 13 10

SERBIA

BELGRADO_HOME CONCEPT · +381 11 6558 960
BELGRADO_PORCELANOSA HOME CONCEPT · +381 11 6557 087

SINGAPUR

SINGAPUR_FERNANDO MARTIN BENITO · +65 97801472 +65 64621620

SRI LANKA

COLOMBO 13_RANJANAS CERAMIC · +94 11 2543255 +94 11 2381386

SUDÁFRICA

CAPE TOWN_CLASSIC TRADING · 021 465 9277 021 462 0973
DURBAN_CLASSIC TRADING · +27 31 579 1900 +27 31 577 7056
JOHANNESBURG_CLASSIC TRADING · +27 11 656 0400 +27 11 656 0403

SUECIA

BROMMA_KAKELPALATZET I BROMA AB · +46 (0)8 56 487 831
GÖTEBORG_KAKELPALATZET I BÄCKEBOL AB · +46 (0)31 571 478
KATRINEHOLM_KAKELPALATZET I KATRINEHOLM AB · +46 (0)8150-51 740
MÖLNDAL - KAKELPALATZET I MÖLNDAL HEADQUARTERS · +46 (0)31 776 50 51

SUIZA

AUBONNE_ARGECOM SA · +41(0)21 807 10 10 +41(0)21 808 61 02
ARBON_HAMA KERAMIKDESIGN · +41 71 446 61 66 +41 71 446 61 65
BIEL_SABAG SA · +41 32 328 28 28 +41 32 328 28 80
CRISSIER_SABAG SA · +41 21 633 06 84 +41 21 633 06 85
GENEVE_SABAG SA · +41 22 908 06 90 +41 22 908 06 95
LUGANO-GRANCIA_PL VALLI SA · +41 919 859 510
MENDRISIO_NEW FORM SWISS SAGL · +41 919 227 356
ROTHENBURG_SABAG SA · +41 41 289 72 72 +41 41 289 72 73
SEVELEN_KAISER AG BAD & PLÄTTLI · +41 81 785 2242 +41 81 785 2204
SUIZA_1219 MAGENTA HOME DESIGN · +41 848 308 308
VOLKETSCHWIL_MPV HANDELS AG · +41 (0)43 399 53 00 +41 (0)43 399 53 20
YVERDON-LES-BAINS_SABAG SA · +41 24 423 44 30 +41 24 423 44 45
YVERDON LES BAINS_SABAG YVERDONS · +41 24 423 4444

SURINAM

PARAMARIBO_JAP HOUSING · +597 817-0064

TAILANDIA

BANGKOK_BOONTHAVORN CERAMIC (RATCHADAPISEK) · +66 2275-0029 +66 2275-2057
BANGKOK_BOONTHAVORN CERAMIC CO. LTD. (PIN-KLAO) · +66 2441-3075 +66 2441-4049
BANGKOK_BOONTHAVORN CERAMIC CO. LTD. (KASET NAVAMIN) · +66 2791-2777 +66 2943-9058
BANGKOK_BOONTHAVORN CERAMIC CO. LTD. (SUVARNNABHUMI) · +66 2316-0429 +66 2750 0682
BANGKOK_BOONTHAVORN CERAMIC CO. LTD. (PATTAYA) · +66 38 052 222 +66 38 052 221
CHIANGMAI_BOONTHAVORN CERAMIC CO. LTD. (CHIANGMAI) · +66 5310-5099 +66 5310-5107
MUEANG SURAT THANI DISTRICT_BOONTHAVORN CERAMIC - SURAT THANI · +66 77 237 000
PATHUMTHANEE_BOONTHAVORN CERAMIC CO. LTD. (RANGSIT) · +66 2902-0171 +66 2902-0184
PRACHUABKIRIKUN_BOONTHAVORN CERAMIC CO. LTD. (HUAHIN) · +66 3252 2555 +66 5488-4144
+66 3252-0141 SAMUTSAKHON_BOONTHAVORN CERAMIC - SAMUTSAKHON · +66 2 896 44712 +66 2 896 4473
UDON THANI_BOONTHAVORN CERAMIC - UDON THANI · +66 42 215 678

TAIWAN

KAOHSIUNG_NEW CENTURY CONSTRUCTIONAL · +886 7 384 8834
TAICHUNG_NEW CENTURY CONSTRUCTIONAL · +886 4 2372 8166
TAINAN_NEW CENTURY CONSTRUCTIONAL · +886 6 2613290
TAIPEI_NEW CENTURY CONSTRUCTIONAL · +886 2 33933123

TANZANIA

DAR ES SALAAM_ABC EMPORIO TANZANIA · +255 719885566

TÚNEZ

GABES_ABC ABDENNADHER · 75 29 49 10 74 24 48 85
HAMMAM SOUSSE_ABC ABDENNADHER · 73 32 44 24 73 32 44 25
HAMMAMET_ABC ABDENNADHER · 72 26 04 77 72 26 04 77
MENZEL HAYET_ABC ABDENNADHER · 73 41 04 16 73 41 04 01
SFAX_ABC ABDENNADHER · 74 46 80 72 74 24 48 85
SOUSSE_ABC ABDENNADHER · 73 37 14 76 73 37 14 75
TUNIS_ABC ABDENNADHER · 71 72 58 80 71 72 57 77 71 76 00 46
TUNIS_LIFE STYLE · +216 71 861 551 +216 71 861 549
TUNIS CEDEX_ABDENNADHER BRICOLAGE CENTER · +216 71 725 194 +216 71 760 046

TURQUÍA

ISTAMBUL_YÜTAS · +90 2 1227 44720 +90 2 1227 20874

UCRANIA

DNIPROPETROVSK_EUROPA DNIPRO · (0562) 31 27 53
KHARKIV_EUROPA · +380 577 714 509
KHMELNYTSKYI_SOPRANO · +380 673 543 447
KYIV_SALON MILLENNIUM CONCEPT · (044) 279 60 60
LVIV_KERAMA MARKET · +380 322 972 500
LVIV_SALON KARMEN · +380 32 244 40 55 +380 32 252 70 94
MYKOLAIV_YALOT · +380 512 500 284
POLTAVA_DOGODA · +380 532 687 575
TERNOPIIL_VERO · 098 67 67 112
VINNYTSIA_LANA · +380 432 507 838

UGANDA

KAMPALA_ABC STILES & BATHZ · +256 776022333

URUGUAY

MONTEVIDEO_ACHER · +598 2 487 5630
PUNTA DEL ESTE_ACHER · +598 4 224 8343 +598 42 250869

UZBEKISTÁN

TASHKENT_PREMIUM CONCEPT · +998 71 256 29 05
TASHKENT_PORCELANOSA TASHKENT · +998 97 753 00 65

VIETNAM

HANOI_MILAN ARCHITECTURAL · 0913212568 0986110133
HANOI_MILAN ARCHITECTURAL · +84 8 5412 1819 +84 8 5412 1820
HANOI_MILAN HOME CENTER · 977800785 +84 4 3234 5028
HANOI_MILAN HOME CENTER DISTRIBUIDOR MR VU THAI · +84 9 1321 2568 +84 4 3234 5028
HO CHI MINH CITY_CASABELLA CO LTD · +84 9 1323 7771

YEMEN

SANAA_AL-YAMAMAH GROUP/ABO JALAL TAHER CORPORATION FOR GENERAL TRADE · +967 1 470 375 +967 1 405 665

YIBUTI

DJIBOUTI_AL-NEIMA IMMOBILIERE · 00253-21356659 00253-21356289



butech

PORCELANOSA Grupo

Technical book RAF 2021

Design and photography: butech Marketing Department

Edited by: butech building technology, S.A.U.

Print:

butech building technology, S.A.U.

Ctra. Villarreal - Puebla de Arenoso
(CV-20) Km 2,5. Villarreal (Spain)

+34 964 53 62 00

butech@butech.es



www.butech.net

The contents of this catalog are protected by Intellectual Property Law, Royal Decree 1 / 1996. Any reproduction of it, in whole or in part, without the consent of PORCELANOSA Grupo is liable under the Penal Code.

