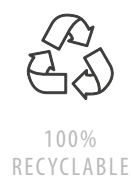
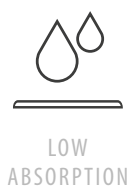


PORCELANOSA
FACADES

butech
PORCELANOSA Grupo

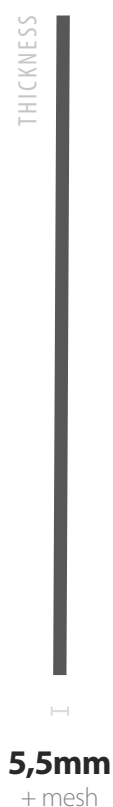
Butech is committed to innovative XLIGHT slim and large format ceramic panels. The technical benefits of this material make it the perfect asset for the construction of facades of great aesthetics.

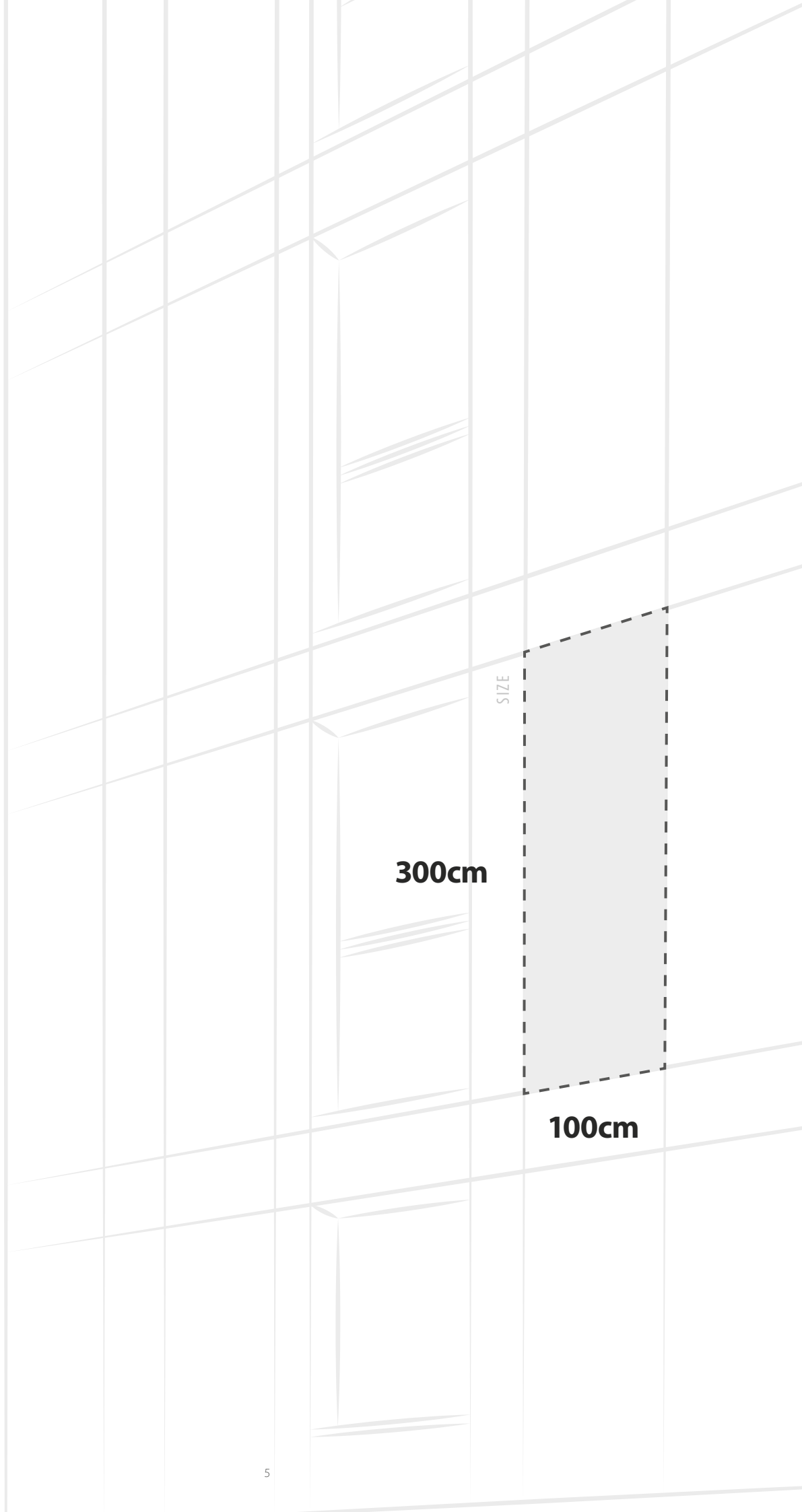
XLIGHT



An unalterable and resistant material issued from the 100x300cm ceramic sheet in just 3mm and 5.5mm thickness, with glass fiber mesh on the back that improves the bending resistance of the plate.

Easy to handle and transport thanks to its lightness and large dimensions, saving execution time. Butech offers bonded and ventilated façade systems designed for XLIGHT plates.





SIZE

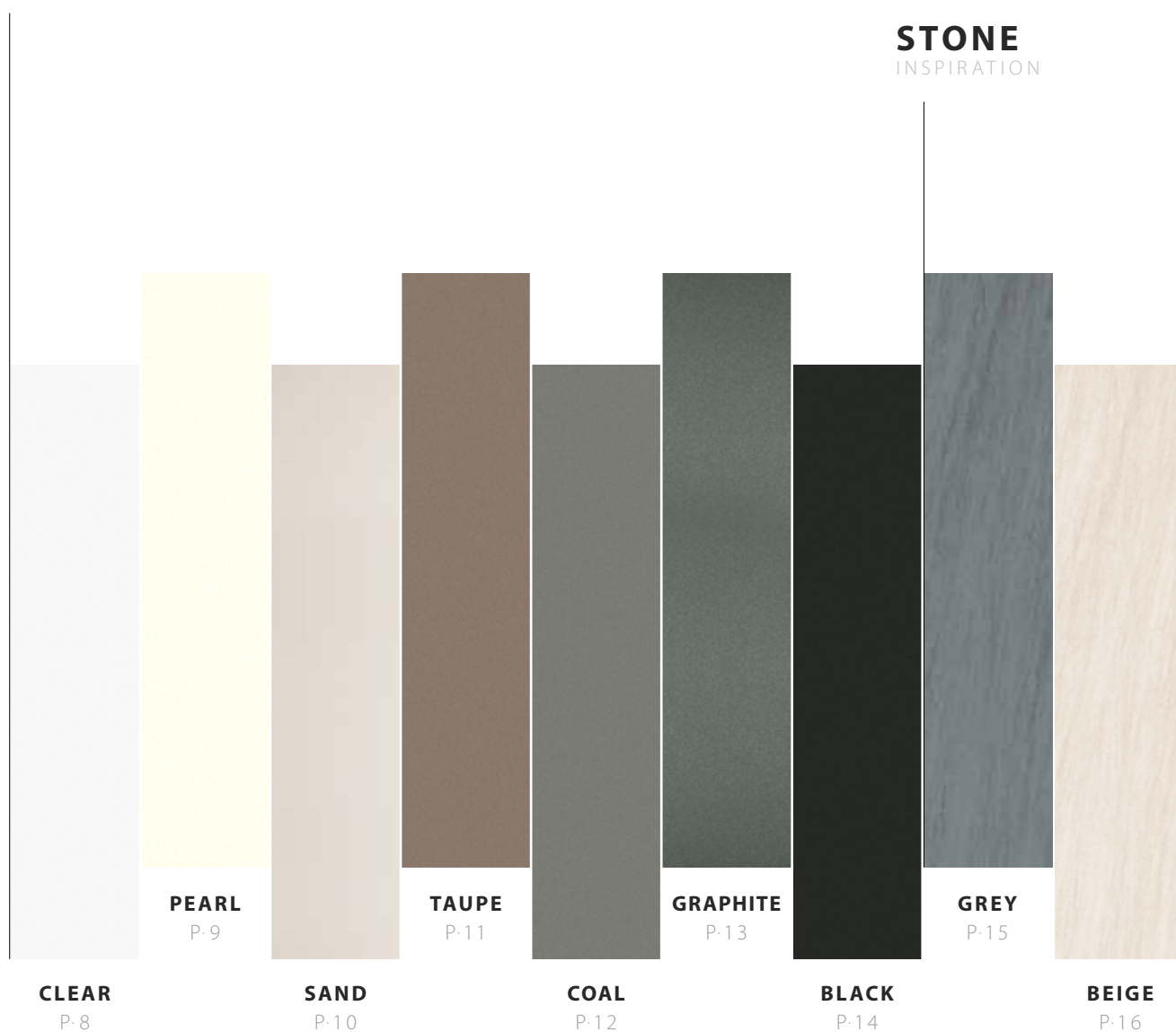
300cm

100cm

VAST COLLECTION

Butech presents a wide range of XLIGHT designs for facade projects: from unalterable single colors to the most avant-garde designs inspired by nature.

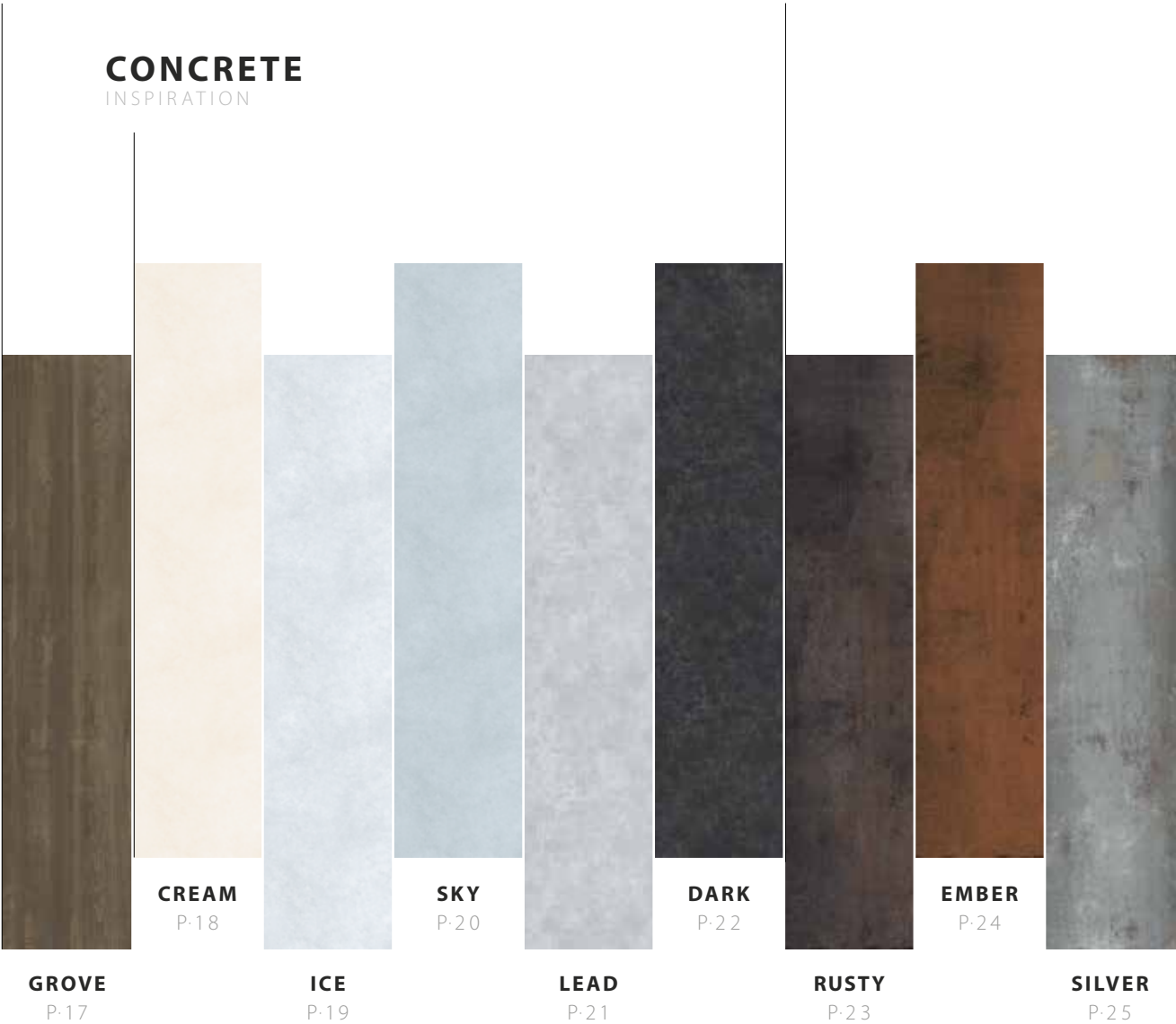
SOLID INSPIRATION



WOOD
INSPIRATION

METAL
INSPIRATION

CONCRETE
INSPIRATION



CLEAR

S O L I D I N S P I R A T I O N

The unmatched, high-tech performance white perfectly fits in projects with greater aesthetic lightness.

CLEAR	Thickness	Finish	SAP	GV
100x300 cm 39 ^{3/8} "x118 ^{1/8} "	3 mm 1/8"	Nature	100287878	G1316
100x300 cm 39 ^{3/8} "x118 ^{1/8} "	5,5 mm 7/32"	Nature	100287825	G1407

PEARL

S O L I D I N S P I R A T I O N

The pearl white hue generates an enveloping design which enhances the brightness of the environment where it is integrated.

PEARL	Thickness	Finish	SAP	GV
100x300 cm 39 ^{3/8} "x118 ^{1/8} "	3 mm 1/8"	Nature	100287800	G1306
100x300 cm 39 ^{3/8} "x118 ^{1/8} "	5,5 mm 7/32"	Nature	100287776	G1321

SAND

S O L I D I N S P I R A T I O N

The beige shades create large and homogeneous surfaces, providing a satisfactory appearance in its application.

SAND	Thickness	Finish	SAP	GV
100x300 cm 39 ^{3/8} "x118 ^{1/8} "	3 mm 1/8"	Nature	100287792	G1306
100x300 cm 39 ^{3/8} "x118 ^{1/8} "	5,5 mm 7/32"	Nature	100287811	G1321

TAUPE

S O L I D I N S P I R A T I O N

Balancing between freshness and warmth, Taupe starts from the essentials to create contemporary and continuous spaces.

TAUPE	Thickness	Finish	SAP	GV
100x300 cm 39 ^{3/8} "x118 ^{1/8} "	3 mm 1/8"	Nature	100287739	G1306
100x300 cm 39 ^{3/8} "x118 ^{1/8} "	5,5 mm 7/32"	Nature	100287786	G1321

COAL

S O L I D I N S P I R A T I O N

Discreet and timeless, the anthracite-toned inspiration expresses stability and firmness, highlighting the benefits of each space.

COAL	Thickness	Finish	SAP	GV
100x300 cm 39 ^{3/8} "x118 ^{1/8} "	3 mm 1/8"	Nature	100287757	G1306
100x300 cm 39 ^{3/8} "x118 ^{1/8} "	5,5 mm 7/32"	Nature	100287775	G1321

GRAPHITE

S O L I D I N S P I R A T I O N

Extremely timeless and elegant functionality
with a touch of serenity.

GRAPHITE	Thickness	Finish	SAP	GV
100x300 cm 39 ^{3/8} "x118 ^{1/8} "	3 mm 1/8"	Nature	100287758	G1306
100x300 cm 39 ^{3/8} "x118 ^{1/8} "	5,5 mm 7/32"	Nature	100287810	G1321

BLACK

S O L I D I N S P I R A T I O N

It combines the delicacy of matte black with the advantages of extra fine porcelain.

BLACK	Thickness	Finish	SAP	GV
100x300 cm 39 ^{3/8} "x118 ^{1/8} "	3 mm 1/8"	Nature	100287782	G1306
100x300 cm 39 ^{3/8} "x118 ^{1/8} "	5,5 mm 7/32"	Nature	100287748	G1321



GREY

STONE INSPIRATION

It recreates the roughness of traditional Italian stone in a design that evokes distinction and sobriety.

GREY	Thickness	Finish	SAP	GV
100x300 cm 39 ^{3/8} "x118 ^{1/8} "	3 mm 1/8"	Nature	100287793	G1307
100x300 cm 39 ^{3/8} "x118 ^{1/8} "	5,5 mm 7/32"	Nature	100287777	G1322



BEIGE

S T O N E I N S P I R A T I O N

The harmony generated by the different cream shades provides great versatility to this naturally inspired collection.

BEIGE	Thickness	Finish	SAP	GV
100x300 cm 39 ^{3/8} "x118 ^{1/8} "	3 mm 1/8"	Nature	100287755	G1307
100x300 cm 39 ^{3/8} "x118 ^{1/8} "	5,5 mm 7/32"	Nature	100287759	G1322



GROVE

W O O D I N S P I R A T I O N

The appearance and texture of the wood are transferred to a natural and realistic-looking ceramic collection that provides greater warmth and resistance to its application.

GROVE	Thickness	Finish	SAP	GV
100x300 cm 39 ^{3/8} "x118 ^{1/8} "	3 mm 1/8"	Nature	100287773	G1307
100x300 cm 39 ^{3/8} "x118 ^{1/8} "	5,5 mm 7/32"	Nature	100287795	G1322

CREAM

C O N C R E T E I N S P I R A T I O N

It combines the texture and simplicity of cement in its softest shade, achieving warm surfaces with a careful color effect.

CREAM	Thickness	Finish	SAP	GV
100x300 cm 39 ^{3/8} "x118 ^{1/8} "	3 mm 1/8"	Nature	100287756	G1307
100x300 cm 39 ^{3/8} "x118 ^{1/8} "	5,5 mm 7/32"	Nature	100287774	G1322

ICE

C O N C R E T E I N S P I R A T I O N

Represents the symbiosis between the simplicity of its soft color and the strength of concrete.

ICE	Thickness	Finish	SAP	GV
100x300 cm 39 ^{3/8} "x118 ^{1/8} "	3 mm 1/8"	Nature	100287794	G1307
100x300 cm 39 ^{3/8} "x118 ^{1/8} "	5,5 mm 7/32"	Nature	100287801	G1322

SKY

C O N C R E T E I N S P I R A T I O N

Create compositions full of fantasy through subtle light blue brushstrokes that elevate the nuances of concrete to a unique design.

SKY	Thickness	Finish	SAP	GV
100x300 cm 39 ^{3/8} "x118 ^{1/8} "	3 mm 1/8"	Nature	100287783	G1307
100x300 cm 39 ^{3/8} "x118 ^{1/8} "	5,5 mm 7/32"	Nature	100287784	G1322

LEAD

C O N C R E T E I N S P I R A T I O N

It combines the natural hue of concrete with the resistance of ceramic.

LEAD	Thickness	Finish	SAP	GV
100x300 cm 39 ^{3/8} "x118 ^{1/8} "	3 mm 1/8"	Nature	100287747	G1307
100x300 cm 39 ^{3/8} "x118 ^{1/8} "	5,5 mm 7/32"	Nature	100287812	G1322

DARK

CONCRETE INSPIRATION

The intensity of black reflects the concrete formwork in a design inspired by the most realistic concretes.

DARK	Thickness	Finish	SAP	GV
100x300 cm 39 ^{3/8} "x118 ^{1/8} "	3 mm 1/8"	Nature	100287781	G1307
100x300 cm 39 ^{3/8} "x118 ^{1/8} "	5,5 mm 7/32"	Nature	100287820	G1322



RUSTY

M E T A L I N S P I R A T I O N

The strength of the darkest metal in an avant-garde industrial design.

RUSTY	Thickness	Finish	SAP	GV
100x300 cm 39 ^{3/8} "x118 ^{1/8} "	3 mm 1/8"	Nature	100287791	G1307
100x300 cm 39 ^{3/8} "x118 ^{1/8} "	5,5 mm 7/32"	Nature	100287797	G1322



EMBER

M E T A L I N S P I R A T I O N

Reds, ochres and blacks blend into a surface that emulates the nuances and textures of impressive rusty steel.

EMBER	Thickness	Finish	SAP	GV
100x300 cm 39 ^{3/8} "x118 ^{1/8} "	3 mm 1/8"	Nature	100287771	G1307
100x300 cm 39 ^{3/8} "x118 ^{1/8} "	5,5 mm 7/32"	Nature	100287772	G1322



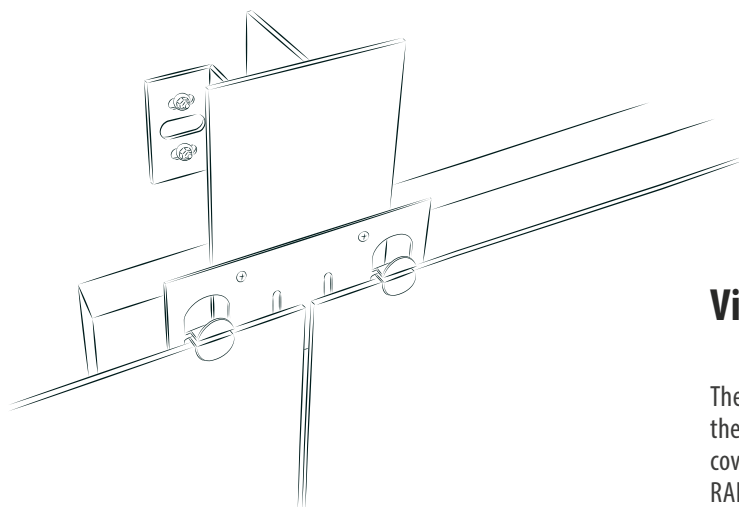
SILVER

M E T A L I N S P I R A T I O N

The most current metallic trend is materialized in a state of the art porcelain tile that stands out for the varied richness of its shades.

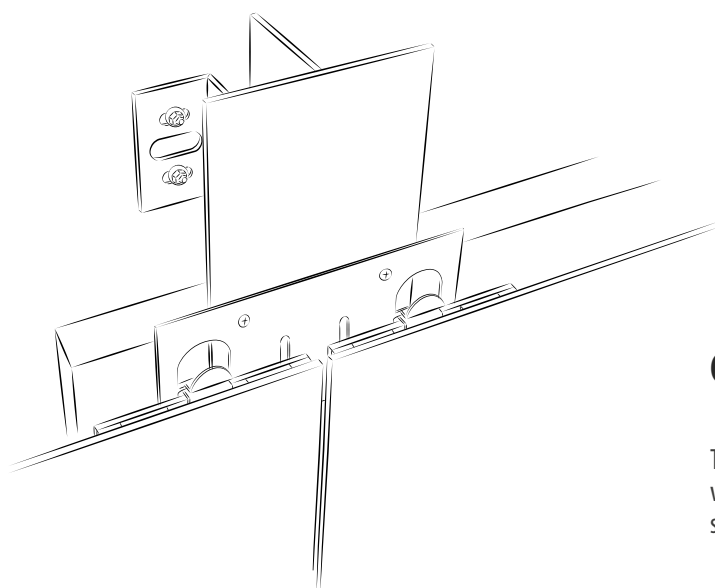
SILVER	Espesor	Acabado	SAP	GV
100x300 cm 39 ^{3/8} "x118 ^{1/8} "	3 mm 1/8"	Nature	100287738	G1307
100x300 cm 39 ^{3/8} "x118 ^{1/8} "	5,5 mm 7/32"	Nature	100287803	G1322

FACADE TYPES



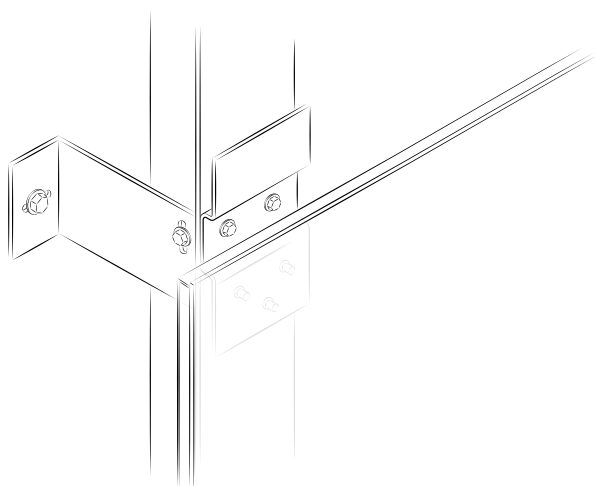
Visible clips

The XLIGHT porcelain panels fit into a stainless-steel clip so that they leave the clip's holding tabs exposed. Depending on the wall covering model, it is possible to lacquer the clips according to the RAL chosen by the client.



Concealed clips

The XLIGHT porcelain panels are supplied attached to metal flats where the fixing clips are fixed to the uprights. The flats have a slot system where the facade clip tabs fit into.



RPP VF System

Concealed clips

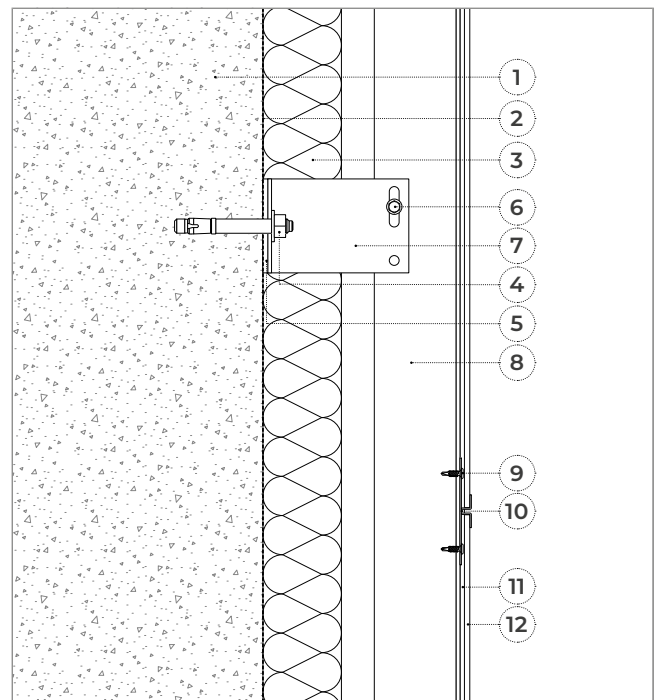
The XLIGHT porcelain panels are supplied with a back reinforcement made up of a 10 mm thick PET panel covered with aluminium, which allows the fixing of the fixing plates clips to the profiles.

CONSTRUCTION DETAILS

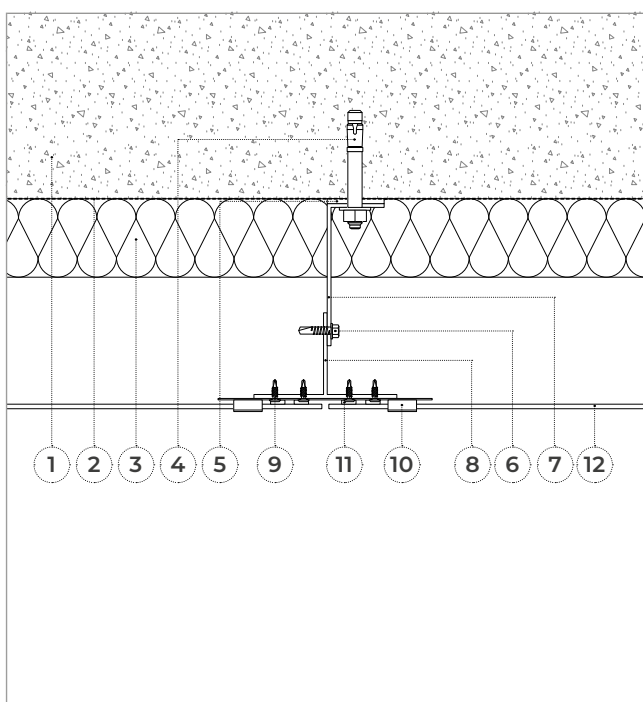
CONCEALED CLIP SYSTEM

Elements of the system

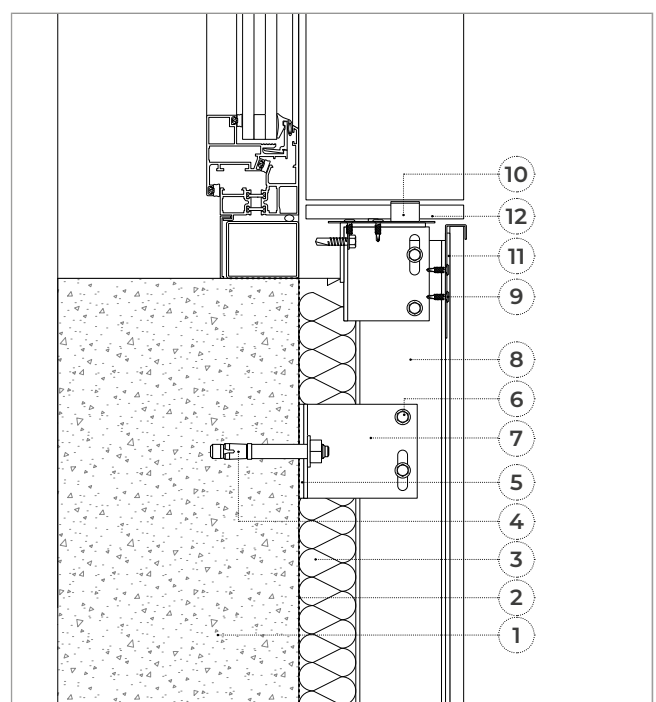
1. CONCRETE SUPPORT
2. WATERPROOFING SHEET
3. THERMAL INSULATION
4. ANCHOR FOR CONCRETE
5. THERMAL BREAK
6. STAINLESS STEEL SELF-DRILLING SCREW
7. L-SHAPED ALUMINUM SPACER
8. ALUMINUM T-SHAPED UPRIGHT
9. SELF-DRILLING SCREW
10. VISIBLE CLIP
11. POLYMER ADHESIVE
12. XLIGHT



VERTICAL CROSS-SECTION



HORIZONTAL CROSS-SECTION



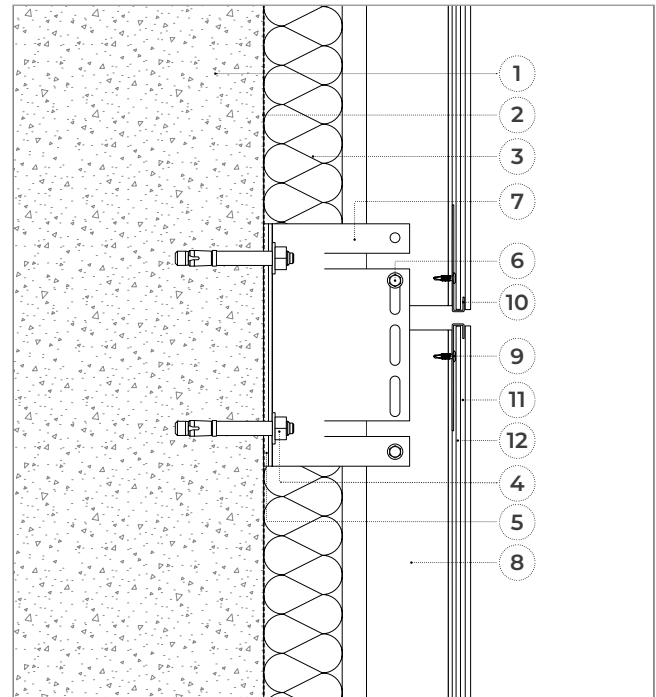
SILL

CONSTRUCTION DETAILS

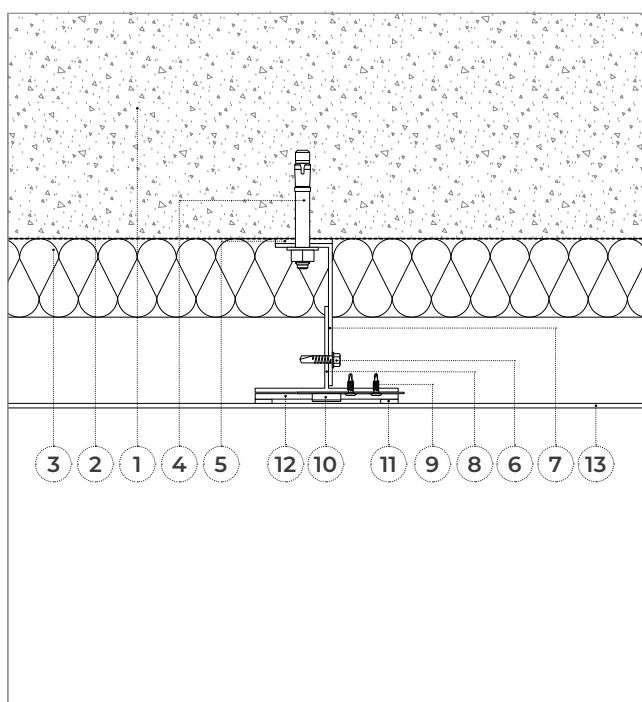
CONCEALED CLIP SYSTEM

Elements of the system

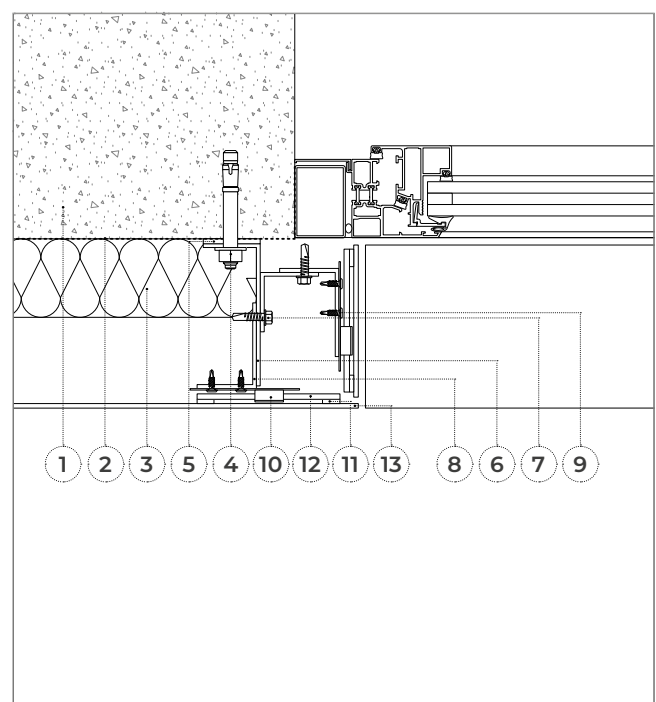
1. CONCRETE SUPPORT
2. WATERPROOFING SHEET
3. THERMAL INSULATION
4. ANCHOR FOR CONCRETE
5. THERMAL BREAK
6. STAINLESS STEEL SELF-DRILLING SCREW
7. L-SHAPED ALUMINUM SPACER
8. ALUMINUM T-SHAPED UPRIGHT
9. SELF-DRILLING SCREW
10. CONCEALED CLIP
11. POLYMER ADHESIVE
12. ALUMINUM PLATE (FLAT)
13. XLIGHT



VERTICAL CROSS-SECTION



HORIZONTAL CROSS-SECTION



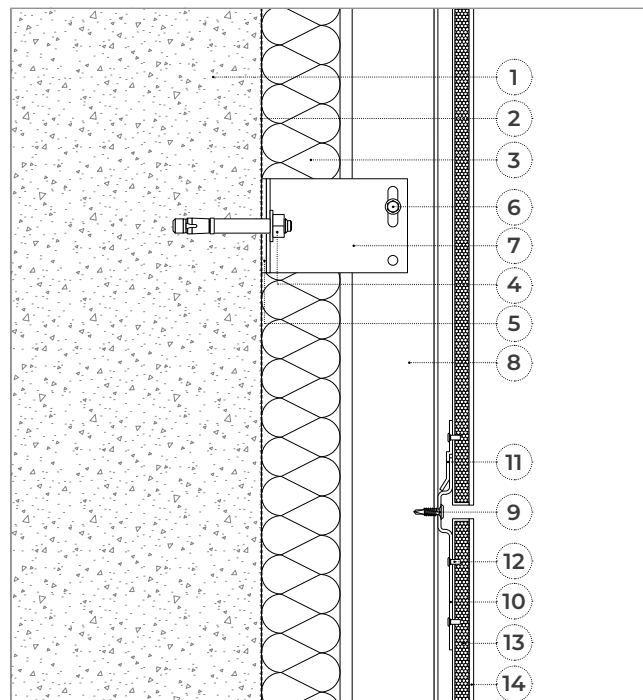
JAMB

CONSTRUCTION DETAILS

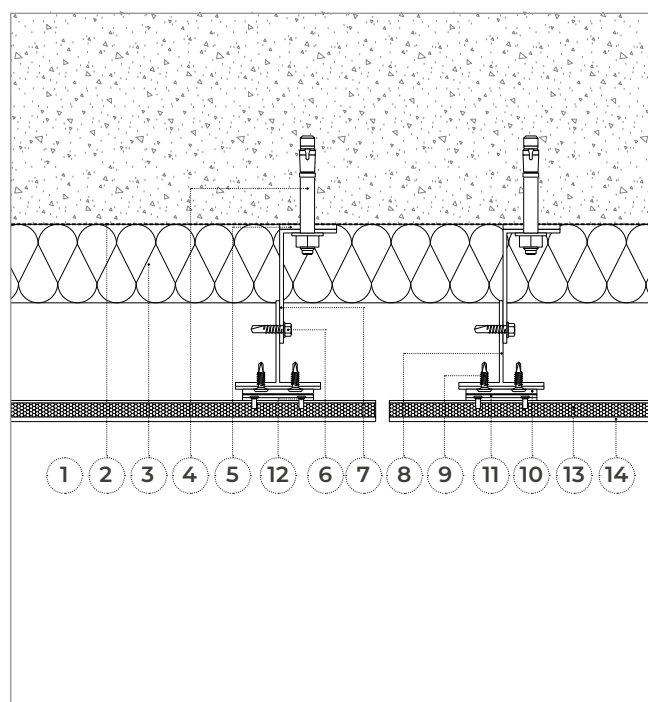
RPP CONCEALED CLIP SYSTEM

Elements of the system

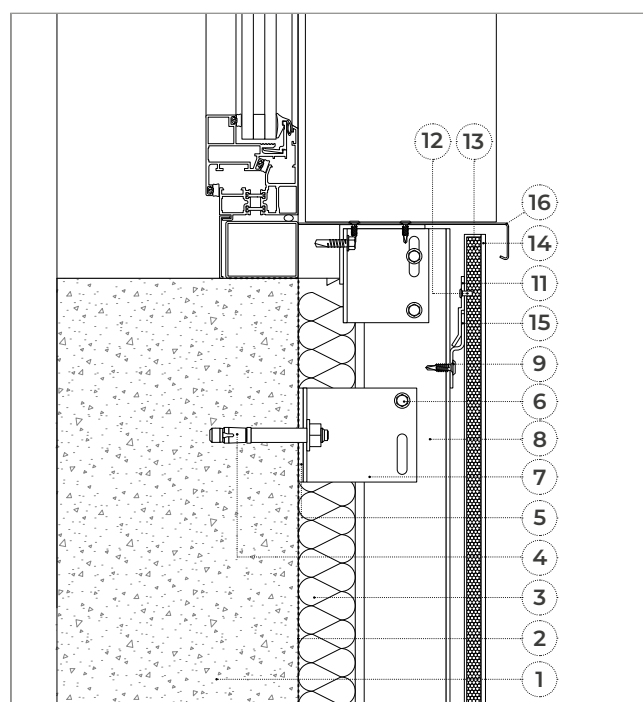
1. CONCRETE SUPPORT
2. WATERPROOFING SHEET
3. THERMAL INSULATION
4. ANCHOR FOR CONCRETE
5. THERMAL BREAK
6. STAINLESS STEEL SELF-DRILLING SCREW
7. L-SHAPED ALUMINUM SPACER
8. ALUMINUM T-SHAPED UPRIGHT
9. SELF-DRILLING SCREW
10. K-BOLT MAIN FIXING CLIP
11. K-BOLT SECONDARY FIXING CLIP
12. ATTACHMENT RIVET
13. PET PANEL
14. XLIGHT
15. -BOLT SUPPORTING CLIP
16. METAL WINDOW CASINGS



VERTICAL CROSS-SECTION



HORIZONTAL CROSS-SECTION



SILL

MODFACADES

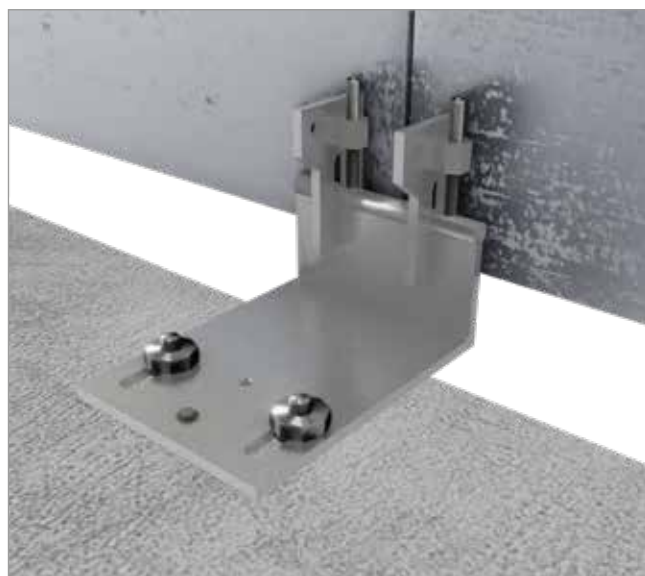
This modular system consists of two types of elements, the sheets that form the envelope and the sheets that anchor the building.

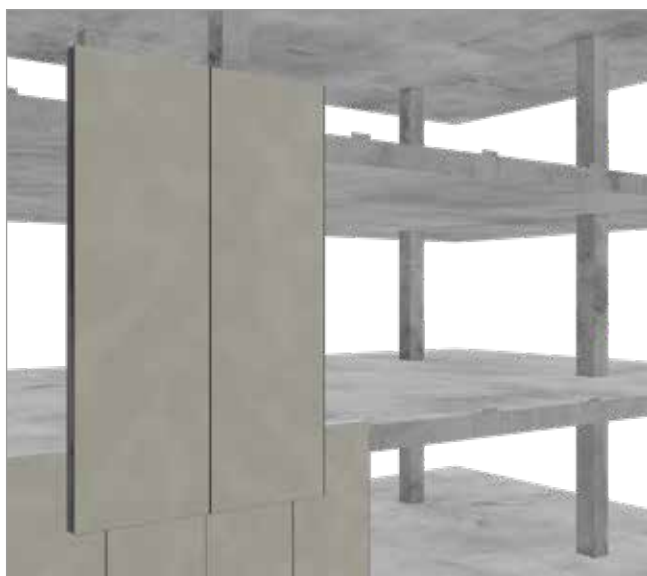
The enclosure plates, up to 200 x 320 cm, are custom made for each project and include the exterior cladding of the building, thermal insulation and supporting structure. Manufactured on a production line on a metal frame, the system consists of XTONE or XLIGHT ceramic sheet fixed to a FERMACELL panel, two layers of thermal insulation of variable thickness and density, and a 0.8 mm galvanized steel sheet on the inside of the panel. .

In addition, it incorporates the claw system to anchor it to the support and the perimeter profiles that guarantee the watertightness of the system.

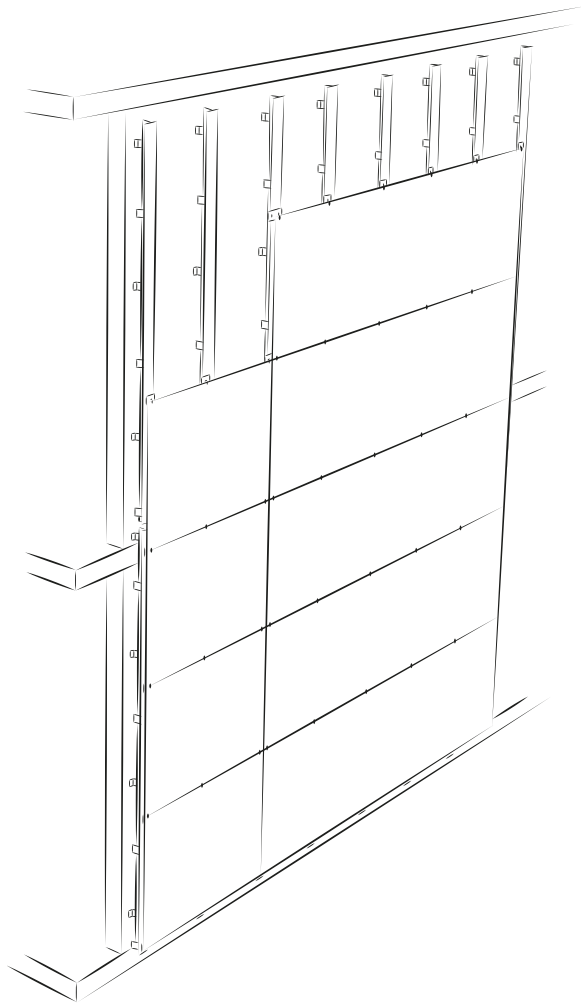
These plates are fixed to the structure of the building by means of metal anchor plates, which in addition to supporting its weight, allow its position to be adjusted in all 3 dimensions, thus ensuring a perfect closure.

The façade plates are supplied from the factory with XTONE or XLIGHT cladding, incorporated, if the project so indicates, with holes for windows and other façade elements. The sheets of the modular system are supplied ready to install, leaving only the interior closing pending according to the needs of the project.

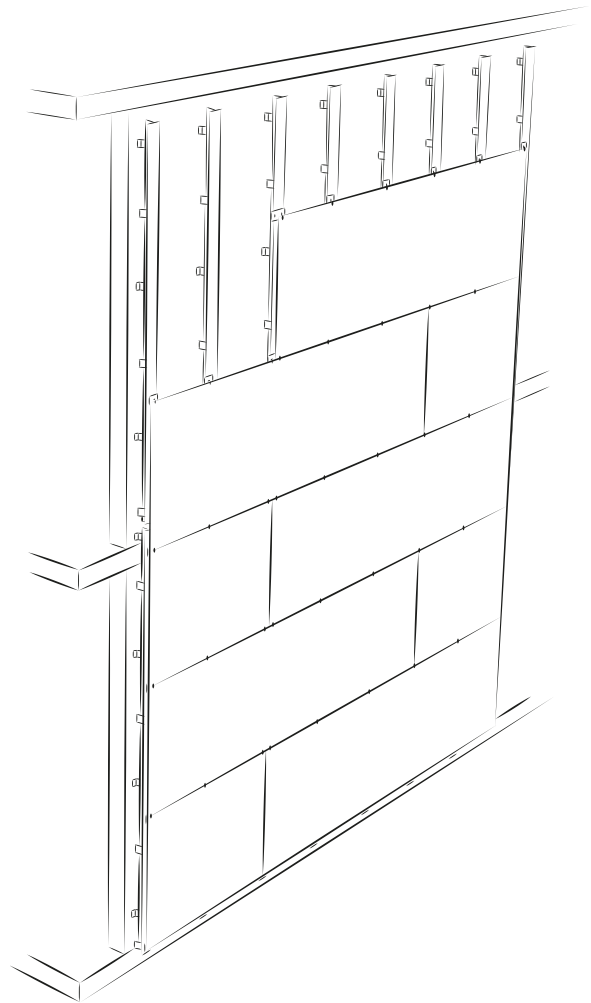




CHARACTERISTICS



**Horizontal orthogonal modulation
with straight joints**



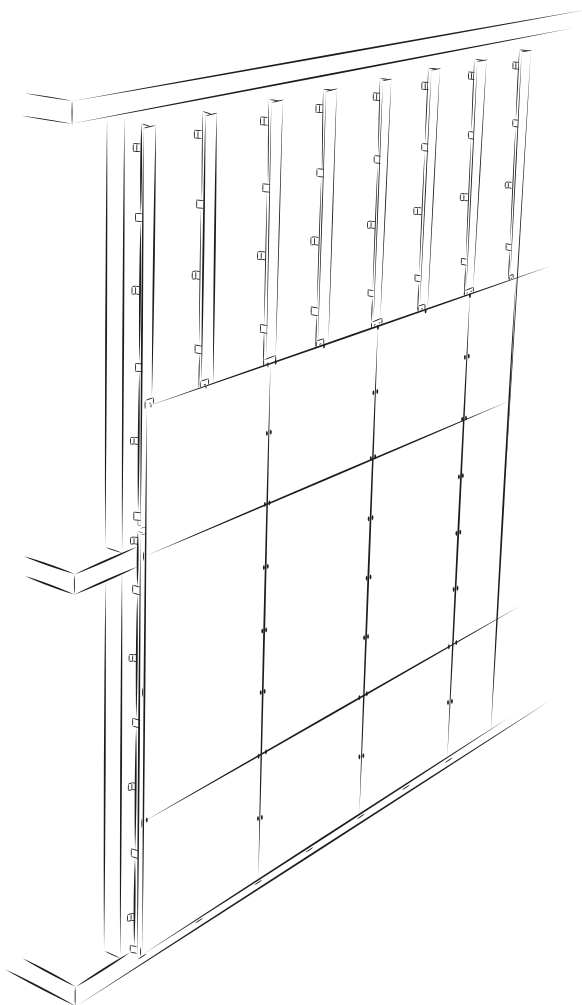
**Horizontal orthogonal modulation
with locked joints**

Facade structure

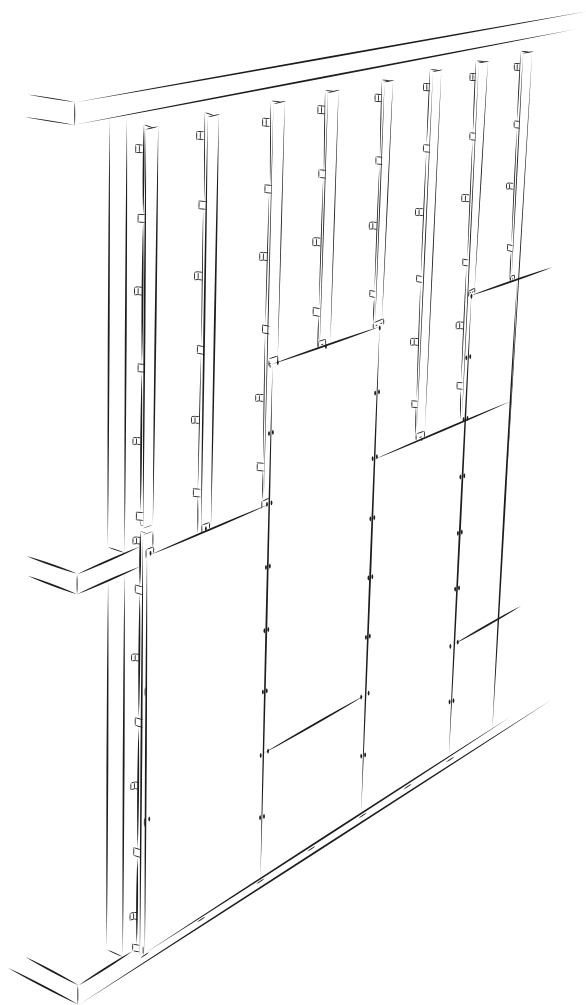
- Facade anchoring direct to the building structure.
- Applicable to most structure and enclosure types used in construction.
- Minimum distance between support and facade: 80 mm.
- Structure consisting of only vertical profiles.
- Structure for very light facade: less than 5 kg/m².
- Quick assembly.

Modulation of the facade

- Reduced presence of installation joints.
- Modulation on one plane and leveled with the facade.
- Horizontal or vertical orthogonal modulation.
- Modulation with straight or locked joints.
- Horizontal installation joints between 5 and 8 mm wide.
- Vertical installation joints starting at 1 mm wide.



**Vertical orthogonal modulation
with straight joints**

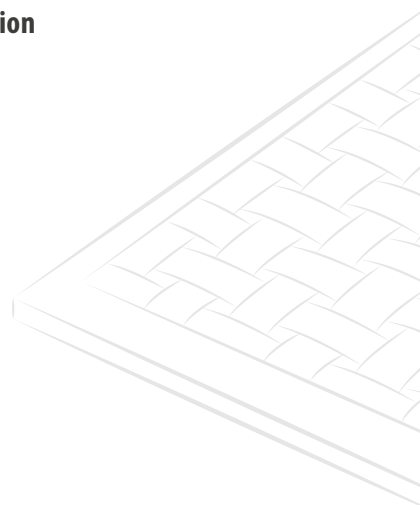


**Vertical orthogonal modulation
with locked joints**

URBATEK XLIGHT PANELS

Exclusive design of PORCELANOSA Grupo.

- Large format: up to 1000 x 3000 mm in the XLIGHT lines.
- Minimum thickness for XLIGHT panels: 3.5 mm
- In the case of XLIGHT, extremely light panels: 9 - 12 kg/m²
- Back-meshed panels to prevent the fall of fragments in case of breakage.
- Weather resistant; the appearance of the panels remains unchanged with the passing of time. Resistant to paint stains or graffiti.
- In the case of XLIGHT facade with exposed clip, excellent price/m².



2013	Nudos Sport Center Ciudad Real, Spain
2014	Paseo Aldrey Shopping Center Mar de Plata, Argentina
	4 Towers Aksa Yapi Erbil, Irak
2015	Vive Cofrentes Building Cofrentes (Valencia), Spain
	Villa Ska Ikoyi (Lagos), Nigeria
	Watford FC Footbal Stadium Watford, United Kingdom
	One Shot Hotel Valencia, Spain
2016	Villa Antas Antas (Almería), España
	Arusha Mall Arusha, Tanzania
	Smilekers Ávila, España
	Villa C/ Valle de Nuria Boadilla del Monte (Madrid), Spain
	C26 Infuturas Project Bogotá, Colombia
	Kuril Tower Dhaka, Bangladesh
	Dulces el Patriarca Building Estepa (Sevilla), Spain
	Francisco I Hotel Madrid, España
	Berkshire House Maidenhead, United Kingdom
	L.21 Lezkairu - Arcayas Building Pamplona, España
	PORCELANOSA Showroom Saint Peray (Valence), France
	Nexia Building San Sebastián de los Reyes (Madrid), Spain

2016	Mead School Stamford (Connecticut), USA
	Olympic residences Ulan bator, Mongolia
2017	Villa Mimosa Aburi, Ghana
	Moraleja Green Shopping Center Alcobendas (Madrid), Spain
	La Fonería Metro Station Barcelona, Spain
	Santa Pau Project Barcelona, Spain
	Olabeaga Building Bilbao, Spain
	Tecmilenio University Ciudad Juarez, Mexico
	Creative Closets Jeddah, Saudi Arabia
	Son Valentí Office Building Mallorca, Spain
	Pacific Center Los Ángeles Torrance (California), USA
	Llusar Headquarters Xilxes (Castellón), Spain
2018	Suavinex Headquarters Alicante, Spain
	C/ Muerstrasse 74 Building Basilea, Switzerland
	Satariano Showroom Birkirkara, Malta
	Catedral Hotel Granada, Spain
	C/ Vizcaya Project Las Rozas (Madrid), Spain
	LL11.6 Lexcairu Building Pamplona, Spain
	Aloft Hotel Queratero, México
	Vera Project Vera (Almería), Spain

2019

Villa Raj

Freetown, Sierra Leone

C/ San Pedro Project

Huelva, Spain

Sovereign Stud Project

Knutsford (Manchester), United Kingdom

515 w 36th street Building

New York City (New York), USA

L11.4 Lezcairu Building

Pamplona, Spain

La Finca

Pozuelo de Alarcón (Madrid), Spain

La Maruca

Santander, Spain

Lintel - Novotec

Silao, Mexico

2020

Elcano Building

Albacete, Spain

Algemesí Project

Algemesí (Valencia), Spain

Fundación Laboral de la Construcción

Bétera (Valencia), Spain

Jameel Project

Lagos (Nigeria), Nigeria

Castillo de Peñíscola Hotel

Peñíscola (Castellón), Spain

25 Muroa - Mutilva Building

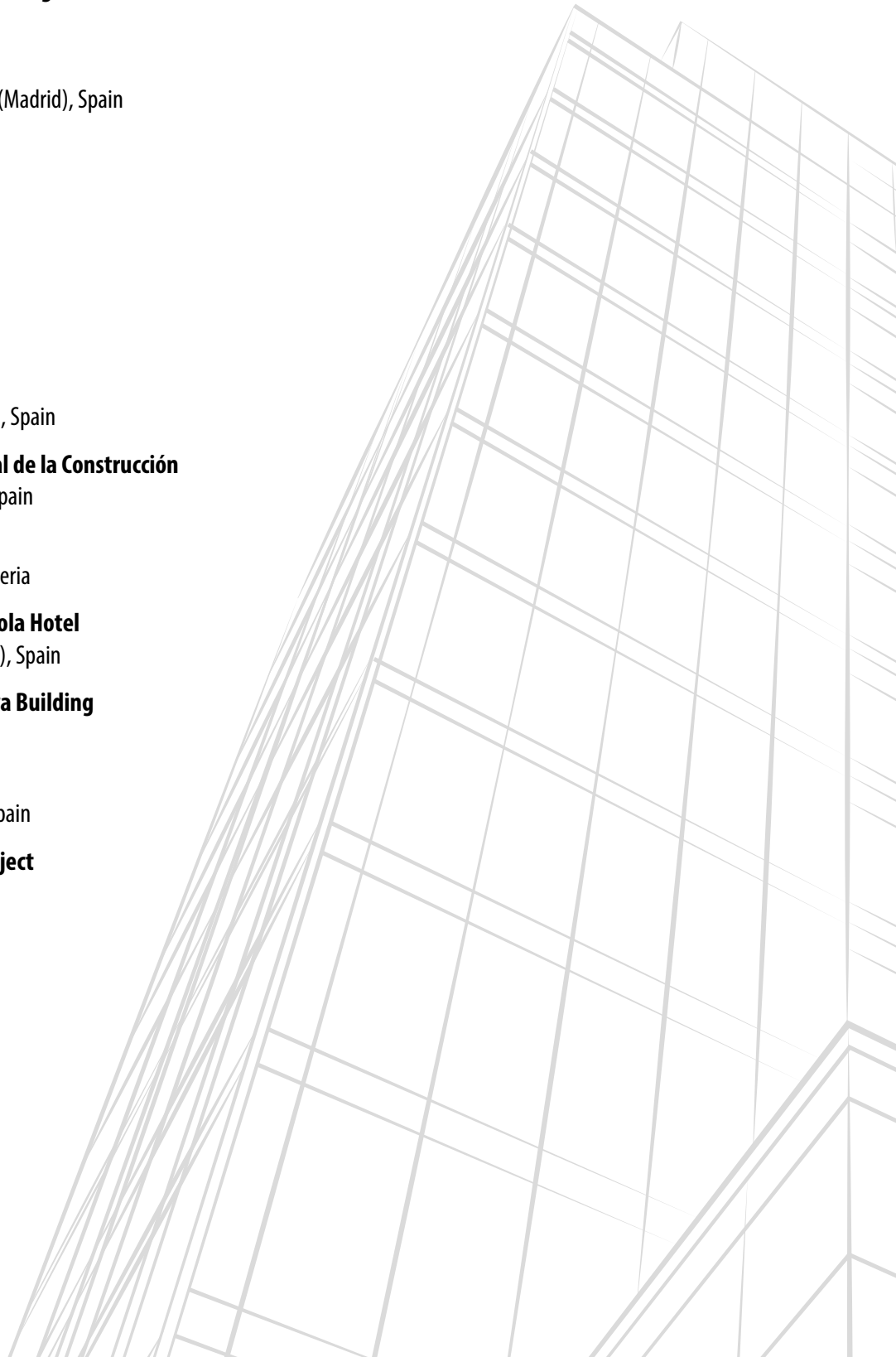
Pamplona, Spain

Jaume I School

Nules (Castellón), Spain

C/ Carreres 10 Project

Valencia, Spain



©2020 butech building technology s.a.

The contents of this catalogue are protected by virtue of the Spanish Intellectual Property Act, Royal Legislative Decree 1/1996. The partial or total reproduction of this catalogue, without the express authorisation of butech is punishable under the Spanish Criminal Code.

butech reserves the right to amend and/or eliminate certain models featured shown in this catalogue without prior warning. The colours of the tiles may differ slightly from the originals.

butech

Carretera Vila-real - Puebla de Arenoso (CV-20), km 2,5
P.O. Box 297 · 12540 Vila-real, Castellón, Spain.
Telephone (+34) 964 53 62 00 · Fax: (+34) 964 53 00 34
E-mail: butech@butech.es · www.butech.es

www.butech.es



BY APPOINTMENT TO
HER MAJESTY THE PRINCESS OF WALES
MANUFACTURER AND DISTRIBUTOR
OF CERAMIC TILES AND BUILDING PRODUCTS
PORCELANOSA GROUP LIMITED

PORCELANOSA Grupo